



Travel to Work Report 2013

Published June 2013

Prepared by Business Development, Data and Information Hub, SCC

For more information regarding the contents of this report, please e-mail:

Richard.Calton@suffolk.gov.uk



Whilst every effort is made to ensure the accuracy of data in this report, neither Suffolk County Council nor its employees may be held liable for errors of fact or interpretation. In most instances figures have been rounded.

This report may be used for research or education purposes, provided a reference to the source is given, and is not used in a misleading context. It may not be used for commercial purposes without further approval, for which a fee may be payable.

Copyright © Suffolk County Council 2013

Content

1	Headline results	4
2	Background and methodology	4
2.1	Validation checks.....	5
3	Results	5
3.1	Q1 Which organisation do you work for?	5
3.2	Q2 Which location do you normally work at? (SCC only)	6
3.3	Q3 Which section do you work in? (SCC only)	6
3.4	Q4 How do you normally travel to work? (All organisations).....	7
3.5	Q5 Of the modes reported in Q4, which do you use the most?	8
3.6	Q6 What distance do you travel to work?	11
3.7	Q7 Whilst at work, how often do you use your own car for work purposes?.....	12
3.8	Q8 If you don't use sustainable transport which of these 'factors' would help persuade you to do so?.....	13
4	Company comparison	14
4.1	Sustainability comparison 2008 to 2012	14
4.2	Most used travel mode comparison.....	17
4.3	What would change your behaviour.....	19
	Appendix A – 1 day travel survey travel questions	22

Figures

Figure 1 - 2005 to 2013 All modal travel trends	10
Figure 2 - 2005 to 2013 Modal travel trends - expanded bottom half	11
Figure 3 - Distance travelled to work (2013).....	11
Figure 4 - Change in travel distance profile	12
Figure 5 - What would persuade you to travel by sustainable means? (% of participants)	13

Tables

Table 1 - Companies participating in the 2013 travel survey.....	5
Table 2 - All travel modes used to travel to work along with their primary (or most used) travel mode.	7
Table 3 - Most used travel mode to work - average of all organisations participating.....	8
Table 4 - Most used travel mode to work – base line organisations only	9
Table 5 - Most used travel mode compared to all travel modes used – all participating organisations.....	9
Table 6 - Modal trends (base line of organisation)	10
Table 7 - Distance travelled to work trends	12
Table 8 - What would persuade you to travel by sustainable means? (% of participants)	13
Table 9 - Headline sustainability results for 2009 to 2013 - by company	14
Table 10 – Returns and Sustainability figures for SCC locations	16
Table 11 - Normal travel mode responses by location for SCC	16
Table 12 - Most used travel mode.....	18
Table 13 - What would change your behaviour	20
Table 14 - What would change your behaviour (SCC only) by location.....	21

1 Headline results

The 2013 online travel to work survey was conducted on the 15th May 2013. 17 organisations participated with a total of 4136 respondents, or 1.2% of the working population of Suffolk.

The key findings from the survey were:

In 2013, 34.8% of respondents usually travelled to work by sustainable modes {Bus, Car passenger, Cycle, Park and Ride, Taxi, Train, Walk and Work from home}, the highest figure ever recorded for Suffolk. When restricted to those organisations that formed the original 2005 base set the sustainability stands at 35.4% an improvement of 3.0% over the 2012 figure and again the highest figure recorded.

Looking at the baseline of organisations, over the period 2005 to 2013:

- Walking to work increased from 7.3% in 2005, to a peak of 10.5% in 2010 and has declined to 9.9% in 2013.
- Home working reached its peak in 2011 with a 6 fold increase on 2005 (0.3% to 1.9%), and now stands at 1.6%
- Train travel has seen a steady 3 fold increase from 1.3% in 2005 to 4.6% in 2013.
- Park and Ride's steady growth (0.3% in 2005 to 1.4% in 2010) has levelled off to 1.1% in 2013. With a drop in 2011 following the closure of the Ipswich, Bury Road Park and Ride.
- Bus usage reached its peak in 2007 at 9.2% and now stands at 5.5%
- Car driver (single occupant and car share) now stands at an all time low of 63%

In 2013 just 26% of respondents used their own car at least once a week for work purposes – this compares with 30% in 2012.

For SCC the survey separated out responses by location – allowing comparisons of travel mode to be made for employees at the same organisation but based at different locations. For SCC the sustainability figure is very variable with Saxmundham having a sustainability figure of just 5% whilst at Endeavour House it is 56%.

2 Background and methodology

Suffolk County Council has produced three Local Transport Plans since 2001 to help guide the future of transport in Suffolk. Suffolk's latest Local Transport Plan [<http://www.suffolk.gov.uk/environment-and-transport/transport-planning/local-transport-plan/>] has a long-term strategy covering the period 2011 through to 2031, while the implementation plan covers the short-term to 2014. The 1-day travel to work survey is one of a number of activities to help Suffolk County Council (SCC), understand how people travel within the county in order to help improve transport services. The survey data is also used to assist companies to develop their own travel plans or monitor progress against existing ones.

The 1-day travel to work survey is conducted on-line and was first used by SCC in May 2003. A copy of the 2013 survey questions is included in Appendix A.

For 2013 'Survey Monkey' software was used for the Survey; opening on the 15th May and staying open for 2 weeks to allow people not at their workplace on the day to respond.

The 2013 survey used 'Survey logic' to skip questions that are not relevant to a particular participant. For example question 2 and 3 were only relevant to SCC so these questions were automatically missed out for others.

To assist individual organisations with their own transport plans the following changes were made to the survey.

- The BT Bibb Way was removed from the survey.
- The Police response was split between Martlesham and Bury PIC.

In total 17 organisations participated, with a total of 4136 respondents or 1.2% of the working population of Suffolk. As not everyone answers every question the response rate varies from question to question.

2.1 Validation checks

A small number of validation checks of the raw data are necessary to ensure the accuracy of the results. This includes the following:

- There are a number of fields where the individual can select the 'Other option' rather than select a specific option. This can be for a variety of reasons such as wishing to provide additional information or having missed the option in the list provided. Processing is needed to ensure that these entries are handled appropriately in the analysis.
- Removing erroneous data – for example travelling by 'solar powered canoe' or finding every box ticked. In these very limited cases the data is treated as test data and is removed prior to the analysis.

3 Results

A copy of the questions asked are shown in Appendix A.

3.1 Q1 Which organisation do you work for?

The organisations and the geographic location of where the majority of the workforces are based are shown in Table 1.

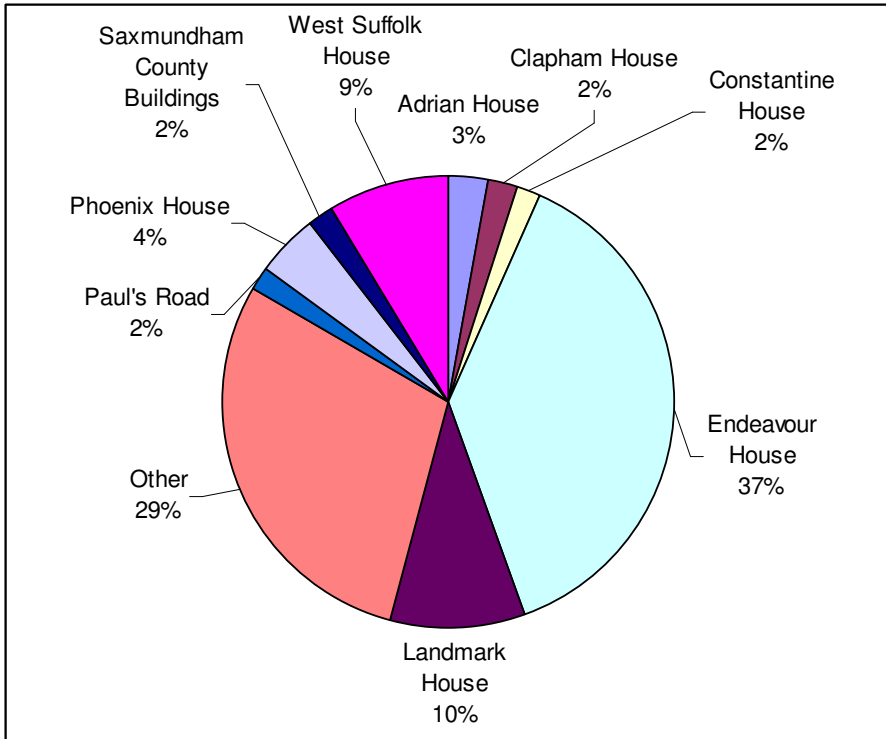
Table 1 - Companies participating in the 2013 travel survey.

Organisation	Main location	Respondents	% of total survey
Babergh District Council	Hadleigh	102	2.5%
BT	Adastral and Bibb Way (Ipswich)	856	20.7%
Customer Service Direct	Ipswich	325	7.9%
Forest Heath District Council	Mildenhall	73	1.8%
Ipswich Borough Council	Ipswich	71	1.7%
Ipswich Hospital NHS Trust	Ipswich	7	0.2%
Mid Suffolk District Council	Needham Market	112	2.7%
NHS Ipswich and East Suffolk Clinical Commissioning Group		10	0.2%
NHS West Suffolk Clinical Commissioning Group		16	0.4%
Police – Bury PIC	Bury	8	0.2%
Police - Martlesham	Martlesham	172	4.2%
St Edmundsbury Borough Council	Bury St Edmunds	126	3.0%
Suffolk Coastal District Council	Woodbridge	70	1.7%
Suffolk Coastal Services	Ufford	22	0.5%
Suffolk County Council	Ipswich	1335	32.3%
University Campus Suffolk	Ipswich	170	4.1%
Waveney District Council	Lowestoft	77	1.9%
Willis	Ipswich	468	11.3%
Other	Various	114	2.8%

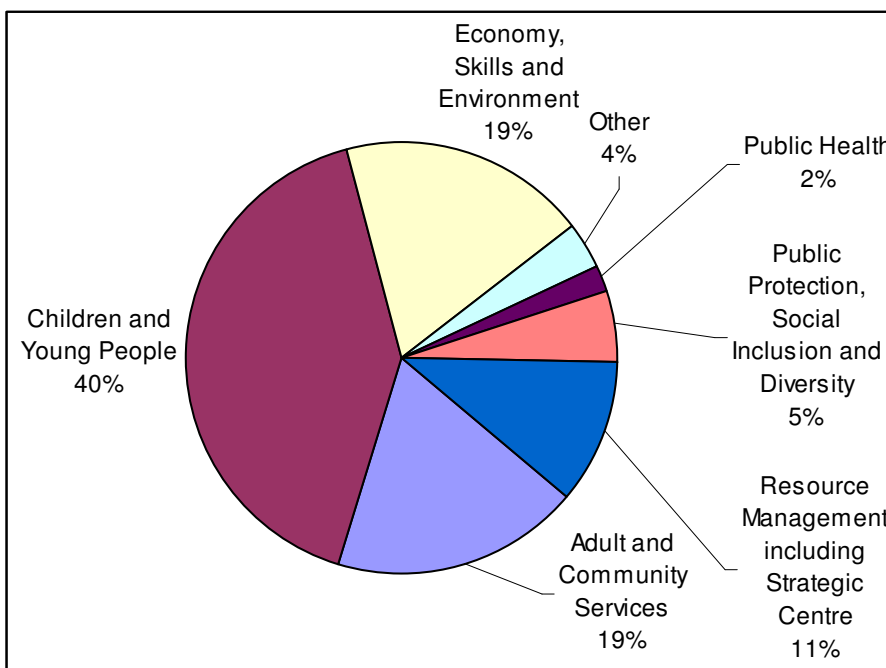
For the analysis of trends and comparisons with previous years the following base set of companies has been used, the main difference from previous years is the absence of Suffolk PCT:

- Babergh District Council
- BT
- Customer Service Direct
- Forest Heath District Council
- Ipswich Borough Council
- Mid Suffolk District Council
- St Edmundsbury Borough Council
- Suffolk Coastal District Council
- Suffolk County Council
- Waveney District Council
- Willis

3.2 Q2 Which location do you normally work at? (SCC only)



3.3 Q3 Which section do you work in? (SCC only)



3.4 Q4 How do you normally travel to work? (All organisations)

The question was intended to capture all modes that people use to get to work, be it multiple modes on a single day or multiple modes over different days. It was intended to show the breadth of travel options that people use – rather than the single primary mode.

Table 2 - All travel modes used to travel to work along with their primary (or most used) travel mode.

		All travel modes									
		Bus	Car driver - single occupant	Car driver - with passenger	Car passenger	Cycle	Motor cycle	Park and Ride	Train	Walking	Work from home
Primary travel mode	Bus	5.0%	0.9%	0.3%	0.7%	0.4%	0.0%	0.0%	0.3%	1.7%	0.3%
	Car driver – single occupant	1.7%	55.4%	4.3%	1.6%	5.0%	1.0%	0.4%	2.0%	3.2%	4.2%
	Car driver - with passenger	0.4%	2.0%	9.3%	0.6%	0.5%	0.2%	0.2%	0.5%	0.8%	0.5%
	Car passenger	0.8%	0.6%	0.6%	3.2%	0.2%	0.0%	0.0%	0.1%	0.5%	0.2%
	Cycle	1.1%	3.4%	0.6%	0.3%	9.6%	0.2%	0.1%	0.3%	2.0%	0.6%
	Motor cycle	0.1%	0.5%	0.0%	0.0%	0.1%	0.9%	0.0%	0.1%	0.0%	0.1%
	Park and Ride	0.1%	0.6%	0.1%	0.1%	0.1%	0.1%	1.0%	0.1%	0.2%	0.1%
	Train	0.6%	1.3%	0.3%	0.3%	0.8%	0.1%	0.0%	4.2%	1.7%	0.4%
	Walk	1.2%	2.2%	0.4%	1.0%	0.9%	0.1%	0.0%	0.3%	10.0%	0.2%
	Work from home	0.1%	0.9%	0.1%	0.1%	0.2%	0.0%	0.0%	0.0%	0.2%	1.2%

The table shows all modes that a person uses as well as their primary mode. The primary mode or normal mode was obtained from the participant’s response to Q5. With the pale yellow squares on each row representing the % that use a particular primary mode of travel. These primary modes add up to 100%. The primary mode % may differ slightly from those given in the next section as not every one completed both questions.

The percentages are the % of all participants. Each row corresponds to a particular primary travel mode and the columns to all travel modes that are used to get to work.

For example – Car driver – single occupant as a primary mode of travel to work is given by the yellow square on the ‘Car driver – single occupant row’ as 55.4%. The square to the left of this yellow square, 1.7%, is the percentage of participants that have a primary travel mode of ‘car driver - single occupant’ but also travel to work by bus, on occasion.

An alternative view is to see what proportion use a particular travel mode sometime – be it every day or occasional. This is obtained by adding together the figures for a travel mode column in table 2.

Travel Mode	% of participants (primary travel mode)			% of participants (sometime)		
	2011	2012	2013	2011	2012	2013
Bus	4.4%	4.6%	5.2%	9.4%	9.8%	11.0%
Car driver - single occupant	55.6%	58.6%	54.0%	69.5%	69.5%	67.9%
Car driver- with passenger	9.6%	9.3%	9.5%	15.4%	14.9%	16.0%
Car passenger	3.1%	2.7%	3.3%	7.9%	6.7%	7.9%
Cycle	9.4%	9.4%	9.4%	16.3%	16.7%	17.8%
Motor cycle	1.2%	0.9%	0.9%	2.6%	2.4%	2.4%
Park and Ride	0.9%	1.0%	1.1%	1.6%	1.9%	1.7%
Train	3.5%	3.3%	4.4%	6.2%	6.0%	7.8%
Work from home	1.6%	1.5%	1.5%	7.3%	8.0%	7.7%
Walk	10.6%	8.7%	10.0%	20.8%	18.7%	20.3%

This shows for example that although 10.0% of participants in 2013 used walking as their primary or normal travel mode to get to work this grows to 20.3% that sometimes walk.

3.5 Q5 Of the modes reported in Q4, which do you use the most?

Table 4 shows the mode share for all participants – using all returns from all organisations. Using this approach the LTP sustainability figure now stands at an all time high of 34.8% - an increase of 3.6% on the LTP sustainability figure of 31.2%.for 2012.

Table 3 - Most used travel mode to work - average of all organisations participating

		Year			
		2009	2011	2012	2013
Primary mode	Bus	5.8%	4.4%	4.6%	5.2%
	Car driver - single occupant (whole journey)	55.5%	55.6%	58.6%	54.0%
	Car driver with a passenger/ car share (any part of the journey)	9.6%	9.6%	9.3%	9.5%
	Car passenger	3.9%	3.1%	2.7%	3.3%
	Cycle	7.8%	9.4%	9.4%	9.4%
	Motor cycle/ moped/ motor scooter	1.3%	1.2%	0.9%	0.9%
	Park and Ride	1.2%	0.9%	1.0%	1.1%
	Train	3.2%	3.5%	3.3%	4.4%
	Work from home	1.2%	1.6%	1.5%	1.5%
	Walk	10.2%	10.6%	8.7%	10.0%
	Other	0.1%	0.1%	0.1%	0.8%
	Sustainable	33.4%	33.4%	31.2%	34.8%

An alternative sustainability figure can be obtained by restricting the organisations to those that have been used historically, in particular to:

Babergh District Council
 BT - Bibb Way
 BT - Martlesham
 Customer Service Direct
 Forest Heath District Council
 Ipswich Borough Council

Mid Suffolk District Council
 St Edmundsbury Borough Council
 Suffolk Coastal District Council
 Suffolk County Council
 Suffolk PCT
 Willis

If this is undertaken without Suffolk PCT (as they no longer exist) the sustainability figure comes out at 35.4% - a new all time high for Suffolk.

Table 4 - Most used travel mode to work – base line organisations only

		Year				
		2009	2010	2011	2012	2013
Primary mode	Bus	5.9%	5.4%	5.0%	4.9%	5.5%
	Car driver - single occupant (whole journey)	55.1%	56.1%	55.4%	57%	53.4%
	Car driver with a passenger/ car share (any part of the journey)	9.7%	9.4%	8.9%	9.6%	9.6%
	Car passenger	4.0%	3.6%	3.1%	3.1%	3.5%
	Cycle	7.9%	7.7%	9.6%	8.3%	9.2%
	Motor cycle/ moped/ motor scooter	1.4%	0.9%	1.3%	0.8%	0.8%
	Park and Ride	1.2%	1.4%	1.0%	1.1%	1.1%
	Train	3.2%	3.4%	3.5%	3.9%	4.6%
	Work from home	1.2%	1.4%	1.9%	1.6%	1.6%
	Walk	10.2%	10.5%	10.1%	9.6%	9.9%
	Other	0.1%	0.1%	0.1%	0.1%	0.8%
		Sustainable	33.8%	33.4%	34.3%	32.4%

Although the sustainability figure is 35.4% for the mode of travel people normally (most) use to travel to work. As shown in section 4, people use a combination of modes if the same sustainability calculation is performed on all the modes that people use the sustainability figure rises to 46.2%. This means that the secondary modes of travel that people use tend to be more sustainable.

Table 5 - Most used travel mode compared to all travel modes used – all participating organisations

		2013	
		Normal mode only	All modes used
Primary mode	Bus	5.2%	6.8%
	Car driver - single occupant (whole journey)	54.0%	42.3%
	Car driver with a passenger/ car share (any part of the journey)	9.5%	10.0%
	Car passenger	3.3%	4.9%
	Cycle	9.4%	11.1%
	Motor cycle/ moped/ motor scooter	0.9%	1.5%
	Park and Ride	1.1%	1.1%
	Train	4.4%	4.9%
	Work from home	1.5%	4.8%
	Walk	10.0%	12.7%
	Other	0.8%	0.1%
		Sustainable	34.8%

3.5.1 Modal trends

Table 6 and Figures 1 & 2 show the modal preference. 'usual mode of transport' or primary travel mode, since 2005 for the baseline organisations.

For the baseline of organisations, from 2005 through to 2013 the percentage travelling by sustainable means has increased from 27.8% in 2005 to 35.4% in 2013.

Walking to work increased from 7.3% in 2005 to a peak of 10.5% in 2010 and 9.9% in 2013.

Home working in 2005 stood at 0.3%, saw a 6 fold increase by 2011 and now stands at 1.6%.

Train travel has seen a steady 3 fold increase from 1.3% in 2005 to 4.6% in 2013.

Park and Ride's steady growth (0.3% in 2005 to 1.4% in 2010) has levelled off to 1.1% in 2013. With a drop in 2011 following the closure of the Ipswich, Bury Road Park and Ride.

Bus usage reached its peak in 2007 at 9.2% and now stands at 5.5%

Car driver (single occupant and car share) now stands at an all time low of 63%

Table 6 - Modal trends (base line of organisation)

Travel Mode	2005	2006	2007	2008	2009	2010	2011	2012	2013
Bus	6.3%	7.7%	9.2%	7.1%	5.9%	5.4%	5.0%	4.9%	5.5%
Car driver	69.7%	68.6%	65.8%	64.3%	64.8%	63.5%	64.5%	66.4%	63.0%
Car driver- car share		13.2%	13.5%	8.7%	9.7%	9.4%	8.9%	9.6%	9.6%
Car driver- single occupant		55.4%	52.2%	55.6%	55.1%	56.1%	55.4%	57.0%	53.4%
Car passenger	4.0%	3.3%	3.6%	3.8%	4.0%	3.6%	3.1%	3.1%	3.5%
Cycle	7.8%	7.4%	7.4%	8.3%	7.9%	7.7%	9.6%	8.3%	9.2%
Motorcycle/Moped/Motor Scooter	2.0%	1.7%	1.7%	1.5%	1.4%	0.9%	1.3%	0.8%	0.8%
Other mode of transport	0.5%	0.1%	0.2%	0.1%	0.1%	0.1%	0.1%	0.1%	0.8%
Park & Ride	0.6%	0.7%	1.0%	1.3%	1.2%	1.4%	1.0%	1.1%	1.1%
Train	1.3%	1.6%	2.1%	2.9%	3.2%	3.4%	3.5%	3.9%	4.6%
Walk	7.3%	8.3%	8.4%	9.8%	10.2%	10.5%	10.1%	9.6%	9.9%
Worked from home	0.3%	0.6%	0.7%	1.0%	1.2%	1.4%	1.9%	1.6%	1.6%
LTP2 sustainability	27.8%	29.6%	32.3%	34.2%	33.8%	33.4%	34.3%	32.4%	35.4%

Figure 1 - 2005 to 2013 All modal travel trends

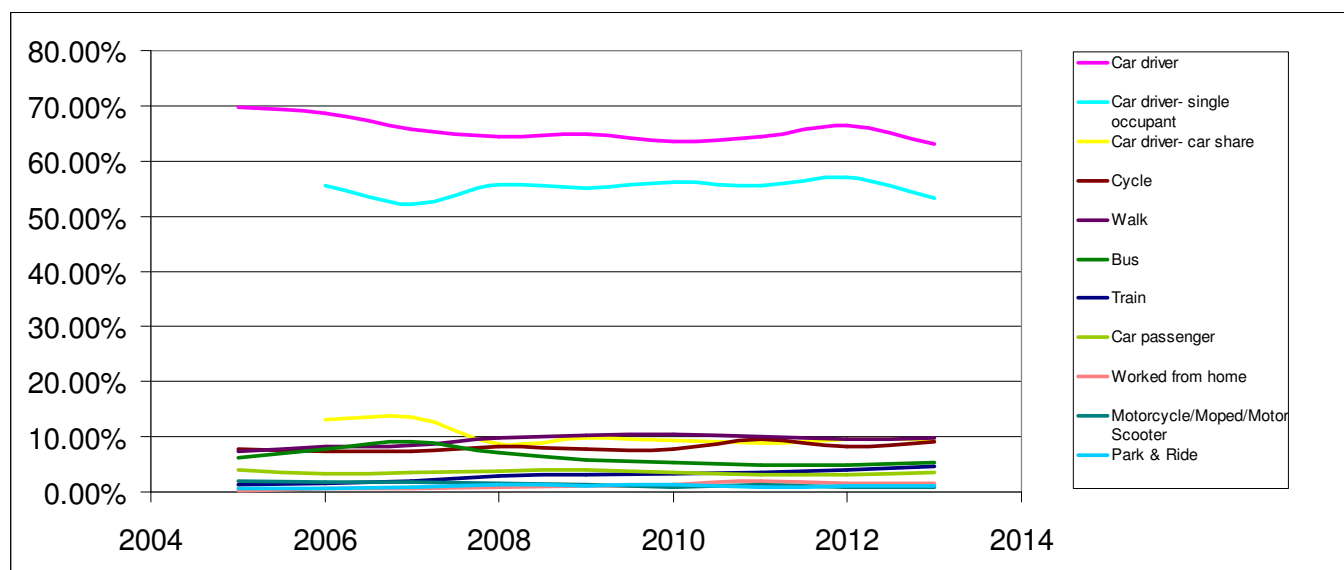
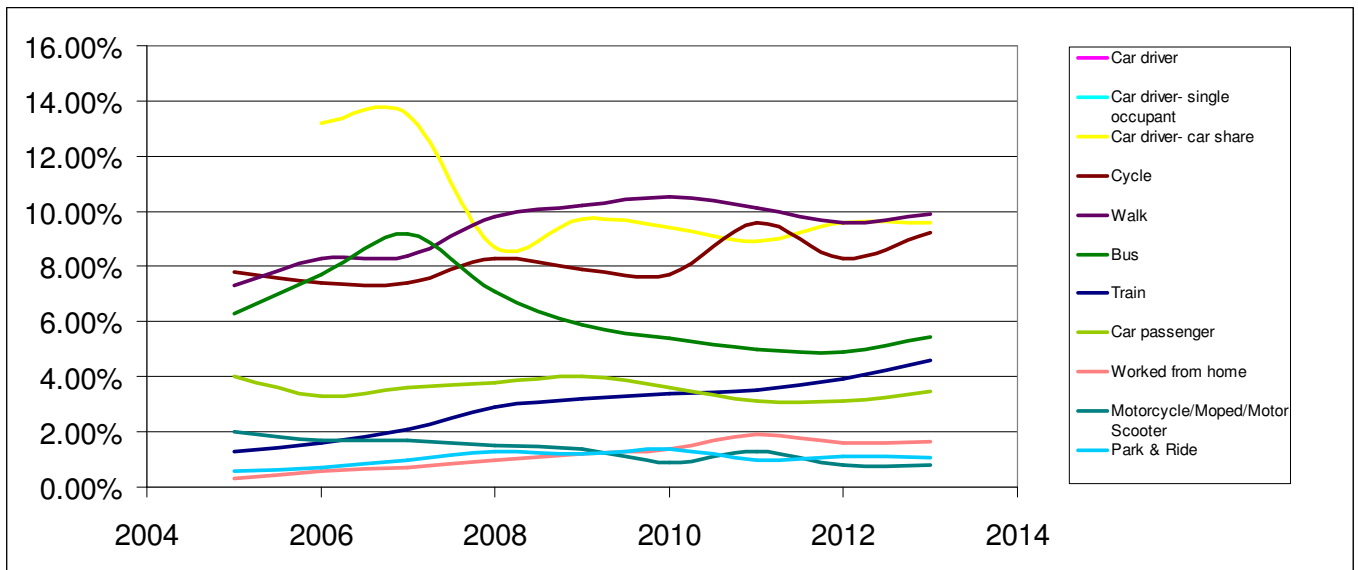


Figure 2 - 2005 to 2013 Modal travel trends - expanded bottom half



3.6 Q6 What distance do you travel to work?

Question 6 was introduced to find the distances people were travelling to work, and analyse whether people were travelling short distances unsustainably.

The distance travelled profile shown in Figure 4 has varied with time but for 2013 has returned to the 2005 profile.

Figure 3 - Distance travelled to work (2013)

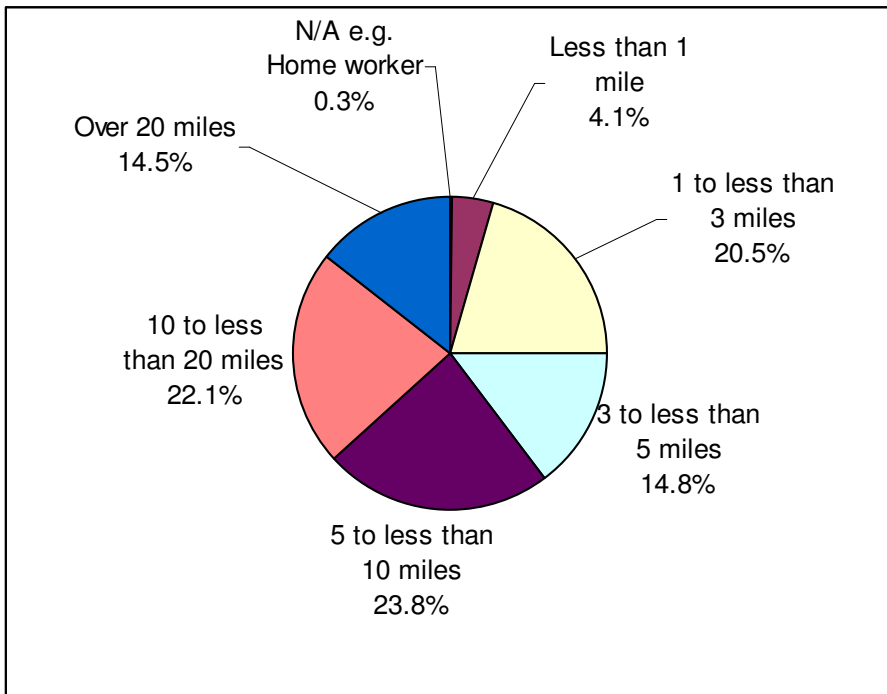


Figure 4 - Change in travel distance profile

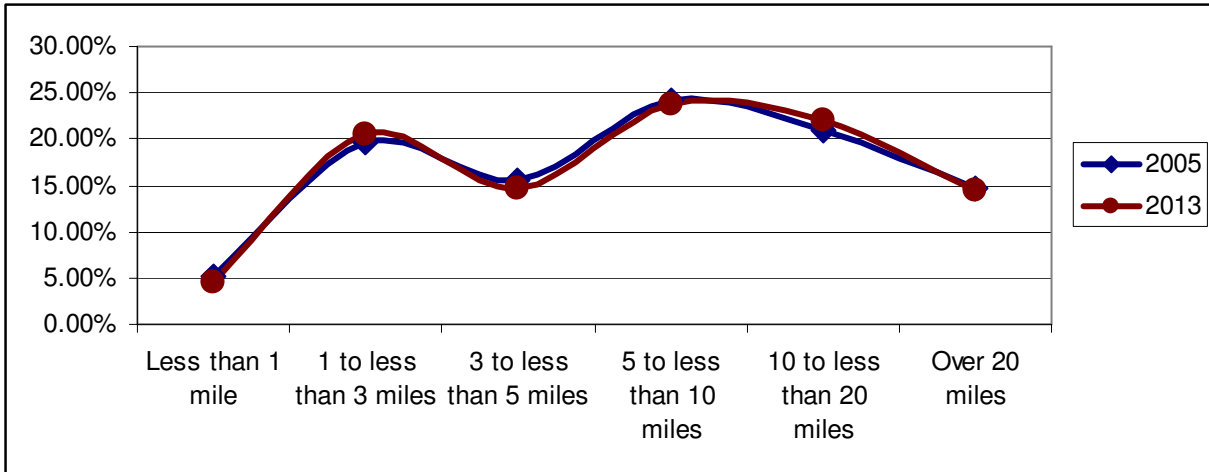
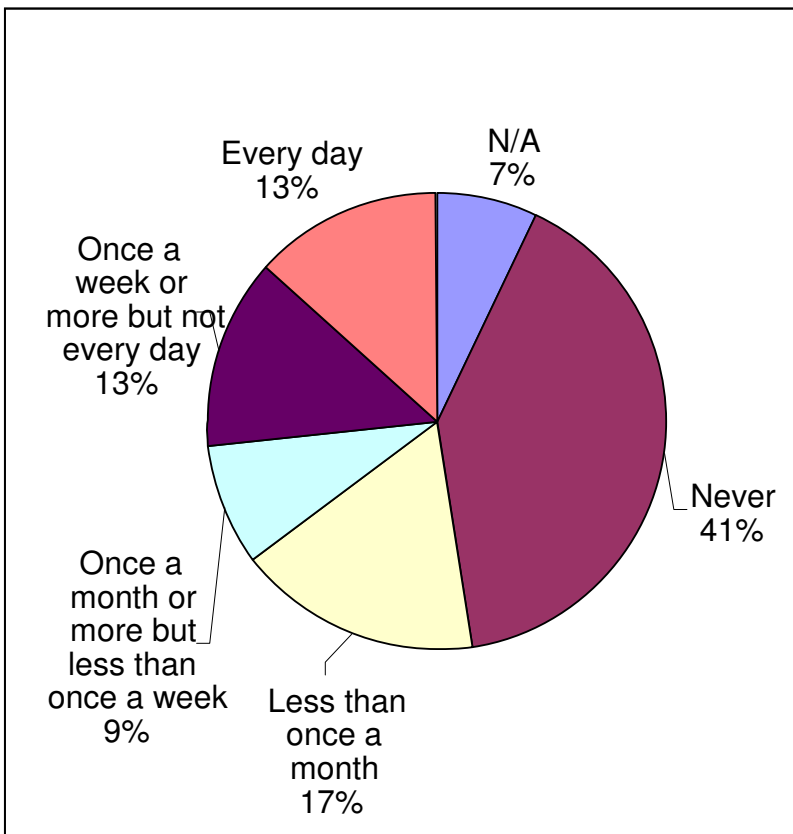


Table 7 - Distance travelled to work trends

Distance	2005	2009	2010	2011	2012	2013
Less than 1 mile	5.1%	5.9%	6.3%	6.0%	6.1%	4.4%
1 to less than 3 miles	19.6%	21.2%	23.2%	23.5%	20%	20.5%
3 to less than 5 miles	15.5%	14.9%	13.8%	14.0%	13.4%	14.8%
5 to less than 10 miles	24.2%	21.4%	19.8%	19.1%	20.2%	23.8%
10 to less than 20 miles	21.0%	22.6%	22.8%	22.1%	24.1%	22.1%
Over 20 miles	14.6%	14.1%	14.0%	15.2%	16.2%	14.5%

3.7 Q7 Whilst at work, how often do you use your own car for work purposes?



In 2013 some 26% use their own car at least once a week, this compares with 30% in 2012.

3.8 Q8 If you don't use sustainable transport which of these 'factors' would help persuade you to do so?

This question was intended to see what factors might persuade people to use sustainable transport. Only those individuals that currently travel by non sustainable means, as their primary or normal mode, have been included in the analysis.

Of 2624 responses that don't currently travel by sustainable means, the highest returns were 30.1% for 'reliability of public transport', 29.5% for 'the cost of public transport' and 24.7% for faster more direct bus services.

The number of committed car users were nothing would persuade them (None and N/A) stands at 29.8% in 2013 this is an increase on the 2012 years figure of 26.6%

Figure 5 - What would persuade you to travel by sustainable means? (% of participants)

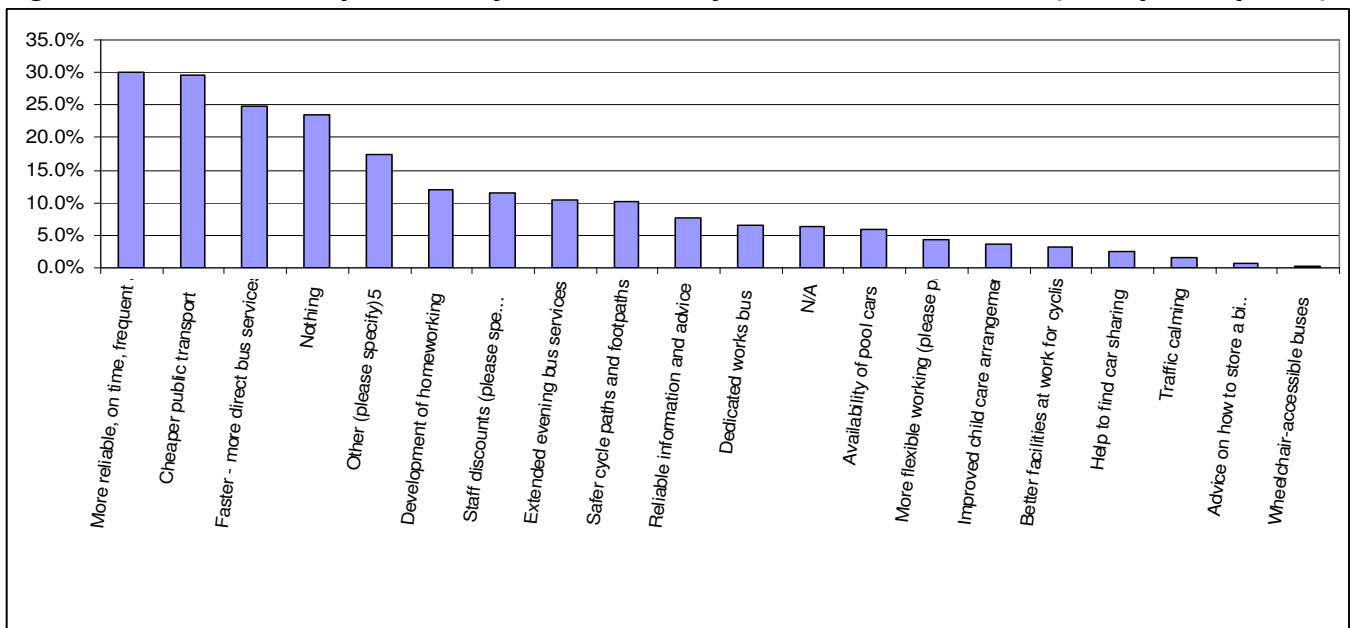


Table 8 - What would persuade you to travel by sustainable means? (% of participants)

Factor	2013
More reliable, on time, frequent and clean public transport	30.1%
Cheaper public transport	29.5%
Faster - more direct bus services	24.7%
Nothing	23.5%
Other	17.4%
Development of homeworking	12.0%
Staff discounts	11.5%
Extended evening bus services	10.5%
Safer cycle paths and footpaths	10.1%
Reliable information and advice on public transport availability	7.6%
Dedicated works bus	6.6%
N/A	6.3%
Availability of pool cars	6.0%
More flexible working	4.3%
Improved child care arrangements	3.6%
Better facilities at work for cyclists	3.1%

Help to find car sharing	2.5%
Facilities at work for cyclists	2.6%
Traffic calming	1.5%
Wheelchair-accessible buses	0.3%

4 Company comparison

For 2013, reports have been produced and distributed to all organisations that took part:

- Babergh District Council
- BT
- Customer Service Direct
- Forest Heath District Council
- Ipswich Borough Council
- Mid Suffolk District Council
- NHS Ipswich and East Suffolk Clinical Commissioning Group
- NHS West Suffolk Clinical Commissioning Group
- Police – Bury PIC
- Police (Martlesham)
- St. Edmundsbury Borough Council
- Suffolk Coastal District Council
- Suffolk Coastal Services
- Suffolk County Council
- The Environment Agency
- NHS Suffolk
- University Campus Suffolk
- Waveney District Council
- Willis

These reports were produced using the raw data out of Survey Monkey. The results contained in this report 'Travel to work report 2013' although still derived using the Survey Monkey data has undergone additional validating (section 2.1) to remove erroneous data etc.

4.1 Sustainability comparison 2008 to 2012

Of the 17 organisations that participated most firms saw a rise in overall sustainable travel modes reported {Bus, Car passenger, Cycle, Park and Ride, Taxi, Train, Walk and Work from home} in 2013 compared to 2012 – the only exceptions were Mid Suffolk DC and Suffolk Coastal DC.

There are big differences in the sustainable transport figures across the county. The highest sustainable figures were 52.9%, 50.5% for Ipswich Borough Council and Customer Service Direct respectively; whilst the lowest at 5.3% and 10.4% were Suffolk Coastal Services and Suffolk Coastal DC respectively.

The distance travelled to work and the % using a car for work have been included in the sustainability trend table as potential contributing factors. The distance travelled to work varies from 8.2 miles for Waveney DC up to 17.2 miles for NHS West Suffolk Clinical Commissioning Group. While the percentage using a car at work, for 1 or more days a week, ranges from 0% for 'Police – Bury PIC' to 55% for Suffolk Coastal Services.

Table 9 - Headline sustainability results for 2009 to 2013 - by company

Company	Main location	No. of returns	Average Distance travelled (miles)	% using a car at	Sustainability %

				work	2009	2010	2011	2012	2013
Babergh DC	Hadleigh	99	10.5	44.4%	13.7	17.1	15.3	8.6	11.5
BT - Bibb Way	Ipswich	846	11.0	13.9%	33.7	35.4	57.1	46.9	33.8
BT - Adastral	Martlesham					32.1	35.8	32.2	
Customer Service Direct	Ipswich	319	9.8	12.2%	48.4	45.1	49.4	43.2	50.5
Forest Heath DC	Mildenhall	73	12.2	46.6%	11.3	10.9	16.9	10.9	12.5
Ipswich BC	Ipswich	68	8.5	19.1%	46.2	47.4	50.0	52.7	52.9
NHS Ipswich and East Suffolk Clinical Commissioning Group		9	10.1	11.1%					22.2
NHS West Suffolk Clinical Commissioning Group		16	17.2	37.5%					12.5
Mid Suffolk DC	Needham Market	106	10.1	44.3%	14.7	16.2	16.8	17	13.2
Other	Various	108	14.0	45.4%	31.6	10.5	26.5	17.5	25.2
Police – Bury PIC	Bury	8	14.8	0%					25.0
Police	Martlesham	170	12.1	13.5%			20.8	18.9	25.4
St Edmundsbury BC	Bury St Edmunds	120	13.9	29.2%	30.0	28.2	26.1	20.4	23.3
Suffolk Coastal DC	Woodbridge	67	11.9	49.3%	9.1	11.8	11.1	11.8	10.4
Suffolk Coastal Services	Ufford	20	12.3	55%	8.9	6.5	15.8	4.3	5.3
Suffolk CC	Ipswich	1286	11.1	40.2%	37.6	35.3	35.8	34.2	38.6
University Campus Suffolk	Ipswich	166	10.4	13.9%		42.9	45.0	44.9	45.2
Waveney DC	Lowestoft	74	8.2	24.3%	28.1	29.6	38.8	32.6	35.6
Willis	Ipswich	463	9.3	13.4%	36.8	36.9	34.8		39.1
Grand Total		5921	10.8	26.7%	33.4	33.4	33.4	31.2	35.1

4.1.1 Sustainability comparison across Suffolk County Council – by location

For SCC participants, responses to Q2 'Which location do you normally work at' allowed the sustainability to be viewed by location as shown in tables 10 and 11. These range from 5% for Saxmundham to 65% for Constantine House.

Table 10 – Returns and Sustainability figures for SCC locations

Location	Returns	Sustainability			
	2013	2010	2011	2012	2013
Adrian House	36				22%
ACS Whitehouse		15%	4%	5%	
Clapham House	27	32%	28%	32%	41%
Constantine House	20	39%	59%	62%	65%
Endeavour House	477	56%	54%	48%	56%
Landmark House	125				28%
Paul's Road	24	12%	17%	24%	21%
Phoenix House	58		20%	28%	48%
Saxmundham County Buildings	22			11%	5%
St Edmund House		42%	37%	39%	
West Suffolk House	106	21%	26%	30%	30%
Other	369	24%	27%	24%	24%

The location of the two highest sustainability figures Endeavour House (56%) and Constantine House (65%) are geographically close to the main location for Ipswich Borough Council and CSD which also had the highest sustainability of the participating firms at 52.9% and 50.5% respectively. This cluster of high sustainability is probably a result of a number of factors such as:

- 400m from the rail station
- Park and Ride stops within 200m
- Staff discounts (50% off season tickets and Park and Ride tickets)
- Free shuttle bus stops outside
- It is reasonably well served by cycle routes - on cycle route 51
- Covered and secure cycle facility provided
- Changing and shower facilities provided for cyclists
- Active green travel plan manage with initiatives such as cycle loan facilities and free cycle service.
- Availability of pool cars for business use (SCC)
- Road traffic congestion getting in and out of work, plus £3 car park charge act as barriers to using a car (SCC).

Table 11 - Normal travel mode responses by location for SCC

	Bus	Car driver - single occupant	Car driver with a passenger	Car passenger	Cycle	Motor cycle	Park and Ride	Train	Walk	Work from home	Sustainability
Adrian House	1	24	4	3	1				3		22.2%
Clapham House	1	13	3	3	3			1	3		40.7%
Constantine House	2	7		1	1		2	1	6		65.0%
Endeavour House	45	168	36	26	47	4	21	59	66	5	56.4%
Landmark House	14	80	8	4	9	2			7	1	28.0%
Paul's Road	1	18	1	1	1				1	1	20.8%
Phoenix House	7	26	3	3	15	1		1	1	1	48.3%
Saxmundham County Buildings		20	1						1		4.5%
West Suffolk House	1	57	17	1	8			6	15	1	30.2%
Other	8	266	14	3	25	2		5	43	3	23.6%
All	80	679	87	45	110	9	23	73	146	12	38.7%

4.2 Most used travel mode comparison

There are big differences in the travel modes used across the county and also between organisations within the same locality.

'Working from home' has some marked differences with the majority of organisations at 0%, a few at around 1% and BT Adastral at 3.7% and Customer Service Direct at 2.5%.

Cycling – varies from 0% in remote areas to 17.8% for BT Adastral Park and 17.2% for Police Martlesham.

Walking – varies from 0% in remote areas to 19.9% for University Campus Suffolk.

Car driver single occupancy varies from 37% to 43% for IBC, CSD and UCS up to 77% to 87% for Babergh District Council, NHS Ipswich and East Suffolk Clinical Commissioning Group, NHS West Suffolk Clinical Commissioning Group and Suffolk Coastal District Council.

Table 12 - Most used travel mode

Response	Main location	Bus	Car driver, single occupant	Car driver with a passenger	Car passenger	Cycle	Motor cycle	Park and Ride	Train	Walk	Work from home
Babergh District Council	Hadleigh	2.1%	79.2%	8.3%	2.1%	0.0%	1.0%	0.0%	0.0%	6.3%	1.0%
BT - Adastral Park	Martlesham	5.7%	53.2%	11.5%	1.9%	17.8%	1.5%	0.1%	1.0%	3.6%	3.7%
Customer Service Direct	Ipswich	7.2%	37.3%	11.6%	6.9%	9.7%	0.6%	2.8%	8.5%	12.9%	2.5%
Forest Heath District Council	Mildenhall	1.4%	75.0%	12.5%	2.8%	2.8%	0.0%	0.0%	0.0%	5.6%	0.0%
Ipswich Borough Council	Ipswich	11.8%	39.7%	5.9%	2.9%	8.8%	1.5%	2.9%	8.8%	16.2%	1.5%
Mid Suffolk District Council	Needham Market	1.9%	76.4%	10.4%	0.9%	0.9%	0.0%	0.0%	2.8%	5.7%	0.9%
NHS Ipswich and East Suffolk Clinical Commissioning Group		0.0%	77.8%	0.0%	11.1%	11.1%	0.0%	0.0%	0.0%	0.0%	0.0%
NHS West Suffolk Clinical Commissioning Group		0.0%	87.5%	0.0%	0.0%	0.0%	0.0%	6.3%	0.0%	6.3%	0.0%
Other (please specify)	Various	3.7%	67.3%	6.5%	2.8%	5.6%	0.9%	0.9%	2.8%	9.3%	0.0%
Police - Bury PIC		0.0%	75.0%	0.0%	12.5%	12.5%	0.0%	0.0%	0.0%	0.0%	0.0%
Police - Martlesham	Martlesham	1.2%	63.9%	9.5%	0.6%	17.2%	1.2%	0.0%	1.2%	5.3%	0.0%
St Edmundsbury Borough Council	Bury St Edmunds	1.7%	68.3%	8.3%	3.3%	3.3%	0.0%	0.0%	1.7%	12.5%	0.8%
Suffolk Coastal District Council	Woodbridge	1.5%	83.6%	6.0%	1.5%	1.5%	0.0%	0.0%	0.0%	6.0%	0.0%
Suffolk Coastal Services	Ufford	0.0%	68.4%	26.3%	0.0%	5.3%	0.0%	0.0%	0.0%	0.0%	0.0%
Suffolk County Council	Ipswich	6.3%	53.8%	6.9%	3.5%	8.7%	0.7%	1.8%	5.7%	11.6%	0.9%
University Campus Suffolk	Ipswich	6.0%	42.8%	9.0%	1.8%	8.4%	3.0%	1.2%	6.6%	19.9%	1.2%
Waveney District Council	Lowestoft	4.1%	58.9%	4.1%	6.8%	8.2%	1.4%	0.0%	4.1%	12.3%	0.0%
Willis	Ipswich	4.8%	45.9%	14.6%	5.0%	3.0%	0.4%	0.7%	8.5%	16.5%	0.7%
Grand Total		5.2%	54.4%	9.6%	3.3%	9.5%	0.9%	1.1%	4.4%	10.1%	1.5%

Key : Green – top 15%
Purple – bottom 15%

4.3 What would change your behaviour

This section looks at the variation between organisations in their response to Q8 **'If you don't use sustainable transport (walking, cycling, bus, train, park and ride, home working or car passenger) which of these would help persuade you to do so?'** It is hoped that tables 14 and 15 would be particularly beneficial to individual organisations in developing their travel plans. There are some distinct differences between organisations and how the participants have answered these questions. There is also definite clustering of answers – for example certain organisations having higher % for public transport related initiatives.

Table 13 - What would change your behaviour

Company	Cheaper public transport	More reliable, on time, frequent and clean public transport	Faster - more direct bus services	Nothing	Development of homeworking	Staff discounts (please specify which service/operator in the service)	Reliable information and advice on public transport availability	Extended evening bus services	Safer cycle paths and footpaths	Better facilities at work for cyclists (please provide details in the box below)	Other (please specify)	Availability of pool cars	More flexible working (please provide details in text box below)	Improved child care arrangements	Traffic calming	Help to find car sharing	Dedicated works bus	Advice on how to store a bike at home
Babergh District Council	11.7%	12.8%	9.0%	13.3%	4.8%	3.2%	5.9%	5.9%	4.8%	2.7%	5.9%	5.9%	0.0%	1.1%	0.0%	0.0%	2.7%	3.7%
BT	13.5%	13.7%	14.1%	8.7%	2.7%	5.4%	3.8%	5.1%	7.0%	1.3%	7.2%	0.8%	1.4%	0.9%	0.1%	0.9%	0.9%	4.6%
Customer Service Direct	17.3%	13.2%	9.2%	5.5%	4.6%	7.2%	3.4%	4.6%	5.3%	1.0%	7.5%	1.0%	3.1%	1.5%	0.0%	0.7%	0.9%	1.9%
Forest Heath District Council	10.9%	15.6%	8.8%	10.2%	8.2%	4.1%	4.8%	6.1%	3.4%	2.7%	6.8%	1.4%	5.4%	2.0%	0.0%	0.7%	0.0%	2.7%
Ipswich Borough Council	19.8%	12.4%	7.4%	5.0%	2.5%	10.7%	1.7%	4.1%	5.0%	1.7%	5.0%	1.7%	0.8%	2.5%	0.0%	0.0%	0.0%	5.0%
Mid Suffolk District Council	11.4%	14.1%	6.0%	11.4%	6.5%	2.2%	3.8%	4.3%	7.1%	1.6%	9.8%	6.0%	3.3%	1.1%	0.5%	0.5%	1.1%	2.2%
NHS Ipswich and East Suffolk CCG	7.7%	7.7%	0.0%	7.7%	15.4%	0.0%	0.0%	0.0%	7.7%	0.0%	23.1%	7.7%	7.7%	0.0%	0.0%	0.0%	0.0%	15.4%
NHS West Suffolk CCG	12.5%	12.5%	15.0%	10.0%	7.5%	0.0%	5.0%	5.0%	5.0%	2.5%	12.5%	2.5%	0.0%	0.0%	0.0%	2.5%	2.5%	5.0%
Other (please specify)	9.2%	13.5%	13.0%	13.0%	4.9%	3.8%	2.2%	6.5%	3.8%	1.1%	10.3%	4.9%	1.1%	0.5%	0.0%	0.5%	0.5%	2.2%
Police - Bury PIC	0.0%	0.0%	0.0%	44.4%	0.0%	0.0%	0.0%	0.0%	22.2%	11.1%	22.2%	0.0%	0.0%	0.0%	0.0%	0.0%	0.0%	0.0%
Police - Martlesham	10.7%	9.9%	10.1%	11.9%	6.3%	6.6%	3.3%	4.2%	4.2%	2.1%	6.6%	2.1%	2.4%	2.1%	0.3%	0.0%	2.1%	6.3%
St Edmundsbury Borough Council	13.1%	14.6%	10.6%	14.1%	3.0%	3.5%	5.0%	6.0%	4.0%	1.0%	7.5%	3.0%	0.5%	2.0%	0.0%	0.0%	1.5%	2.5%
Suffok Coastal District Council	13.8%	14.5%	9.9%	10.5%	4.6%	5.9%	2.6%	5.9%	5.3%	2.6%	7.2%	3.9%	0.7%	1.3%	0.0%	0.0%	2.0%	2.0%
Suffolk Coastal Services	13.5%	16.2%	10.8%	10.8%	5.4%	2.7%	5.4%	2.7%	2.7%	0.0%	10.8%	5.4%	5.4%	0.0%	0.0%	0.0%	2.7%	2.7%
Suffolk County Council	12.0%	12.2%	8.8%	9.2%	6.8%	5.0%	2.7%	3.2%	4.9%	1.7%	8.7%	4.1%	2.0%	2.0%	0.1%	0.9%	1.1%	2.1%
University Campus Suffolk	17.2%	12.5%	11.4%	3.9%	2.8%	7.2%	4.4%	6.7%	5.0%	1.7%	7.2%	2.5%	1.9%	1.7%	0.3%	0.8%	1.7%	2.8%
Waveney District Council	13.4%	10.8%	8.3%	5.1%	6.4%	6.4%	3.8%	1.3%	8.9%	7.0%	5.7%	3.2%	1.3%	2.5%	0.6%	2.5%	1.3%	1.9%
Willis	20.0%	17.2%	8.8%	8.1%	4.4%	5.2%	3.9%	7.2%	4.1%	1.1%	4.2%	0.2%	1.5%	2.0%	0.1%	1.7%	0.8%	1.4%
Total	14.1%	13.4%	10.3%	8.8%	4.9%	5.3%	3.5%	4.8%	5.4%	1.6%	7.4%	2.4%	1.8%	1.6%	0.1%	0.9%	1.1%	2.9%

Key : Green – top 15%, Purple – bottom 15%

Table 14 - What would change your behaviour (SCC only) by location

Company	Cheaper public transport	More reliable, on time, frequent and clean public transport	Faster - more direct bus services	Nothing	Development of homeworking	Staff discounts (please specify which service/operator in the	Reliable information and advice on public transport availability	Extended evening bus services	Safer cycle paths and footpaths	Better facilities at work for cyclists (please provide details in the text field	Other (please specify)	Availability of pool cars	More flexible working (please provide details in text box below - you may	Improved child care arrangements	Traffic calming	Help to find car sharing	Dedicated works bus	N/A Advice on how to store a bike at home ...
Adrian House	11.8%	14.7%	10.3%	7.4%	2.9%	2.9%	5.9%	1.5%	5.9%	1.5%	5.9%	7.4%	2.9%	0.0%	1.5%	1.5%	1.5%	0.0%
Clapham House	14.6%	17.1%	7.3%	4.9%	7.3%	2.4%	4.9%	0.0%	2.4%	0.0%	7.3%	9.8%	0.0%	2.4%	0.0%	0.0%	2.4%	0.0%
Constantine House	14.8%	14.8%	11.1%	7.4%	7.4%	3.7%	0.0%	0.0%	3.7%	0.0%	3.7%	0.0%	0.0%	3.7%	0.0%	0.0%	7.4%	0.0%
Endeavour House	15.4%	12.8%	8.6%	4.2%	6.1%	6.1%	2.9%	4.0%	5.1%	1.1%	6.7%	2.0%	1.6%	2.5%	1.2%	1.1%	1.5%	0.3%
Landmark House	7.9%	11.6%	13.7%	10.8%	10.0%	4.6%	2.1%	2.5%	5.8%	2.1%	7.5%	7.1%	2.5%	0.8%	1.7%	1.2%	5.0%	0.0%
Paul's Road	17.1%	14.3%	5.7%	14.3%	5.7%	5.7%	0.0%	0.0%	2.9%	0.0%	14.3%	5.7%	0.0%	0.0%	0.0%	0.0%	2.9%	0.0%
Phoenix House	14.1%	9.8%	9.8%	9.8%	5.4%	3.3%	2.2%	2.2%	7.6%	5.4%	17.4%	1.1%	0.0%	1.1%	0.0%	1.1%	1.1%	1.1%
Saxmundham County Buildings	3.2%	6.5%	9.7%	29.0%	0.0%	6.5%	3.2%	6.5%	6.5%	0.0%	9.7%	3.2%	0.0%	3.2%	0.0%	0.0%	0.0%	0.0%
West Suffolk House	10.4%	9.1%	9.8%	17.7%	5.5%	4.3%	1.2%	1.8%	4.9%	1.2%	9.8%	6.1%	1.2%	3.0%	1.8%	0.6%	2.4%	0.0%
Other	9.5%	12.3%	6.7%	11.4%	8.0%	4.4%	3.0%	3.4%	4.2%	2.3%	10.1%	5.0%	3.1%	1.7%	0.3%	1.6%	1.7%	0.2%
Total	12.0%	12.2%	8.8%	9.2%	6.9%	4.9%	2.7%	3.1%	5.0%	1.7%	8.7%	4.1%	2.0%	2.0%	0.9%	1.1%	2.1%	0.2%

Key : Green – top 15%
Red – bottom 15%

Appendix A – 1 day travel survey travel questions

This is a short survey to research how people travel to work.

* 1. Which organisation do you work at?

- | | | |
|---|---|---|
| <input type="radio"/> Babergh District Council | <input type="radio"/> NHS Ipswich and East Suffolk Clinical Commissioning Group | <input type="radio"/> Suffolk County Council |
| <input type="radio"/> BT | <input type="radio"/> NHS West Suffolk Clinical Commissioning Group | <input type="radio"/> Suffolk New College |
| <input type="radio"/> Customer Service Direct | <input type="radio"/> Police - Bury PIC | <input type="radio"/> The Environment Agency |
| <input type="radio"/> Forest Heath District Council | <input type="radio"/> Police - Martlesham | <input type="radio"/> University Campus Suffolk |
| <input type="radio"/> Ipswich Borough Council | <input type="radio"/> St Edmundsbury Borough Council | <input type="radio"/> Waveney District Council |
| <input type="radio"/> Ipswich Hospital NHS Trust | <input type="radio"/> Suffolk Coastal District Council | <input type="radio"/> Wills |
| <input type="radio"/> Mid Suffolk District Council | <input type="radio"/> Suffolk Coastal Services | |
| <input type="radio"/> Other (please specify) | | |

***2. Which location do you normally work at?**

- Adrian House
- Clapham House
- Constantine House
- Endeavour House
- Landmark House
- Paul's Road
- Phoenix House
- Saxmundham County Buildings
- West Suffolk House
- Other (please specify + postcode)

***3. Which section do you work in?**

- Adult and Community Services
- Children and Young People
- Economy, Skills and Environment
- Elected Councillor
- Public Health
- Public Protection, Social Inclusion and Diversity
- Resource Management including Strategic Centre
- Other (please specify)

***4. How do you normally travel to work? You can choose all modes that you use. For example you may normally use a car plus Park and Ride (Monday to Thursday) and on a Friday you have a significant walk to a railway station. Then you would record car, Park and Ride, walk and train.**

- Bus
- Car driver - single occupant (whole journey)
- Car driver with a passenger/ car share (any part of the journey)
- Car passenger
- Cycle
- Motor cycle/ moped/ motor scooter
- Park and ride
- Train
- Work from home
- Walk
- Other (please specify)

***5. Of the modes reported above, which do you use the most?
(if you use several modes, record the one for the longest distance, unless you use Park and Ride in which case record Park and Ride)**

- Bus
- Car driver - single occupant (whole journey)
- Car driver with a passenger/ car share (any part of the journey)
- Car passenger
- Cycle
- Motor cycle/ moped/ motor scooter
- Park and ride
- Train
- Work from home
- Walk
- Other (please specify)

***6. What distance do you travel to work?**

- Less than 1 mile
- 1 to less than 3 miles
- 3 to less than 5 miles
- 5 to less than 10 miles
- 10 to less than 20 miles
- Over 20 miles
- NA e.g. Home worker

***7. Whilst at work, how often do you use your own car for work purposes?**

- Every day
- Once a week or more but not every day
- Once a month or more but less than once a week
- Less than once a month
- Never
- N/A

8. If you don't normally use sustainable transport (walking, cycling, bus, train, Park and Ride, homeworking or car passenger) which of these would help persuade you to do so?

- Reliable information and advice on public transport availability
- Cheaper public transport
- More reliable, on time, frequent and clean public transport
- Extended evening bus services
- Faster - more direct bus services
- Staff discounts (please specify which service/operator in the text field below - you may need to select other first)
- Safer cycle paths and footpaths
- Better facilities at work for cyclists (please provide details in the text field below - you may need to select other first)
- Wheelchair-accessible buses
- Availability of pool cars
- More flexible working (please provide details in text box below - you may need to select other first)
- Development of homeworking
- Improved child care arrangements
- Traffic calming
- Help to find car sharing
- Advice on how to store a bike at home, indoors or outside, safely and conveniently
- Dedicated works bus
- Nothing
- N/A
- Other (please specify)