

2021 Census Topic Summary 3: Ethnic group, national identity, language, and religion

A first look at the results for Suffolk County and our Districts and Boroughs, compared to England and Wales

The following tables were released on 29th November 2022:

Topic	Table name	Minimum available geography
National identity	National identity (UK)	OA
	National identity (detailed)	MSOA
Religion	Religion	OA
	Religion (detailed)	MSOA
	Multiple religions in household	OA
Language	Household language (English and Welsh)	OA
	Main language (detailed)	LTLA
	Multiple main languages in household	OA
	Proficiency in English language	OA
Ethnic group	Ethnic group	OA
	Ethnic group (detailed)	MSOA
	Multiple ethnic groups in household	OA

OA = Output Area. This is the smallest geography for which Census data is released. There are 2,527 OAs in Suffolk in 2021, with an average usual resident population of just over 300 people.
LSOA = Lower Super Output Area. All data available at OA level is also available for LSOAs. There are 449 LSOAs in Suffolk, with an average usual resident population of just under 1,700 people.

MSOA = Middle Super Output Area. There are 90 MSOAs in Suffolk, with an average usual resident population of just under 8,500 people.

LTLA = Lower Tier Local Authority (District and Borough Council areas)

All data used in this paper were sourced from the 2021 and 2011 ONS Census outputs. Some total counts may differ slightly.

National identity

National identity (UK)

Table 1: Usual resident population by national identity, Suffolk and England and Wales, 2021 Census

	Suffolk		England and Wales
	Persons	%	%
Total: All usual residents	760,685		
British only identity	398,802	52.4%	54.8%
English only identity	153,321	20.2%	14.9%
English and British only identity	135,495	17.8%	13.6%
Welsh only identity	1,807	0.2%	3.2%
Welsh and British only identity	736	0.1%	0.6%
Any other combination of only UK identities	6,882	0.9%	1.2%
Irish only identity	2,143	0.3%	0.5%
Irish and at least one UK identity	527	0.1%	0.1%
Other identity only (non-UK)	51,884	6.8%	9.2%
Other identity (non-UK) and at least one UK identity	9,088	1.2%	1.9%

The data from 2021 are not meaningfully comparable to 2011. There has been a very significant increase in the number of usual residents describing their national identity as “British” and a fall in the number describing their national identity as “English”. While this may partly reflect true change, it is most likely to be a result of the changes to the question structure where "British" became the top response option in 2021 for England only. The 2011 questionnaire also allowed people to tick more than one identity.

- According to the 2021 Census results, 52.4% of Suffolk’s population gave their national identity as British only. Across England and Wales as a whole, 54.8% of people identified as British only.
- One in five Suffolk residents identified as English only, compared to just over 1 in 7 across England and Wales.

National identity (detailed)

For a full breakdown of national identities among Suffolk’s population, [please click the link below](https://www.nomisweb.co.uk/livelinks/16053.xlsx). This will download a Microsoft Excel file containing the full data for Suffolk’s Districts and Boroughs, Suffolk county and England and Wales.

Religion

Religion

Table 2: All usual residents by religion, 2011 and 2021 Censuses

	Suffolk				England and Wales
	2011	2021	Change	% change	% change
Total: All usual residents	728,163	760,688	32,525	4.5%	6.3%
Has religion	458,055	379,116	-78,939	-17.2%	-10.8%
Christian	443,632	358,454	-85,178	-19.2%	-17.2%
Buddhist	2,094	2,792	698	33.3%	10.0%
Hindu	2,274	3,024	750	33.0%	26.5%
Jewish	677	778	101	14.9%	3.0%
Muslim	5,818	9,279	3,461	59.5%	42.9%
Sikh	626	770	144	23.0%	23.9%
Other religion	2,934	4,019	1,085	37.0%	44.8%
No religion	215,921	334,644	118,723	55.0%	57.2%
Not answered	54,187	46,928	-7,259	-13.4%	-11.0%

- Just under 50% of Suffolk’s population has a religion according to the 2021 Census, down from 63% in 2011.
- 6.2% of residents did not answer the religion question in 2021.
- The percentage of the Suffolk population who are Christian now sits at 47.1%, a fall of 13.8 percentage points since 2011. Of those that answered this question, 50% said that they were Christian.
- The number of people practicing all other religions in Suffolk has increased over the past decade. There are now 20,662 people in the county that practice a religion other than Christianity, 2.7% of the total population.
- The number of Buddhists and Hindus has increased by around one third, while there are almost 60% more Muslims in the county in 2021 than there were ten years ago.
- The number of people with no religion has grown by 55% since 2011 and now accounts for 44% of Suffolk’s population, up from 29.7% in 2011.

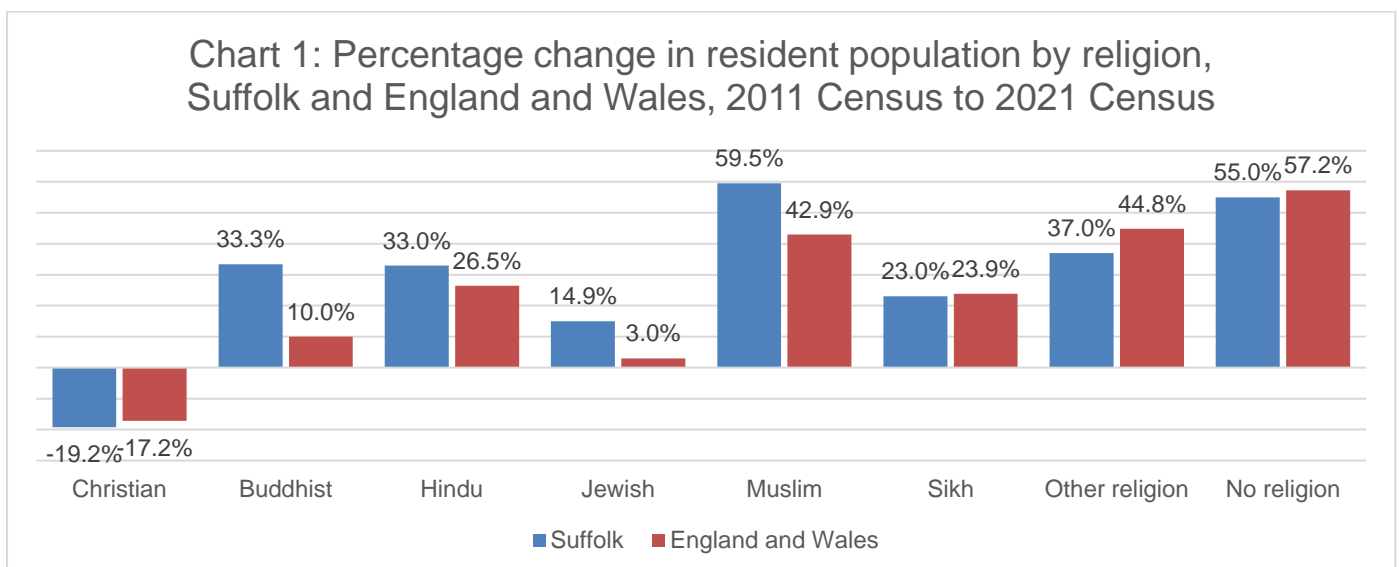
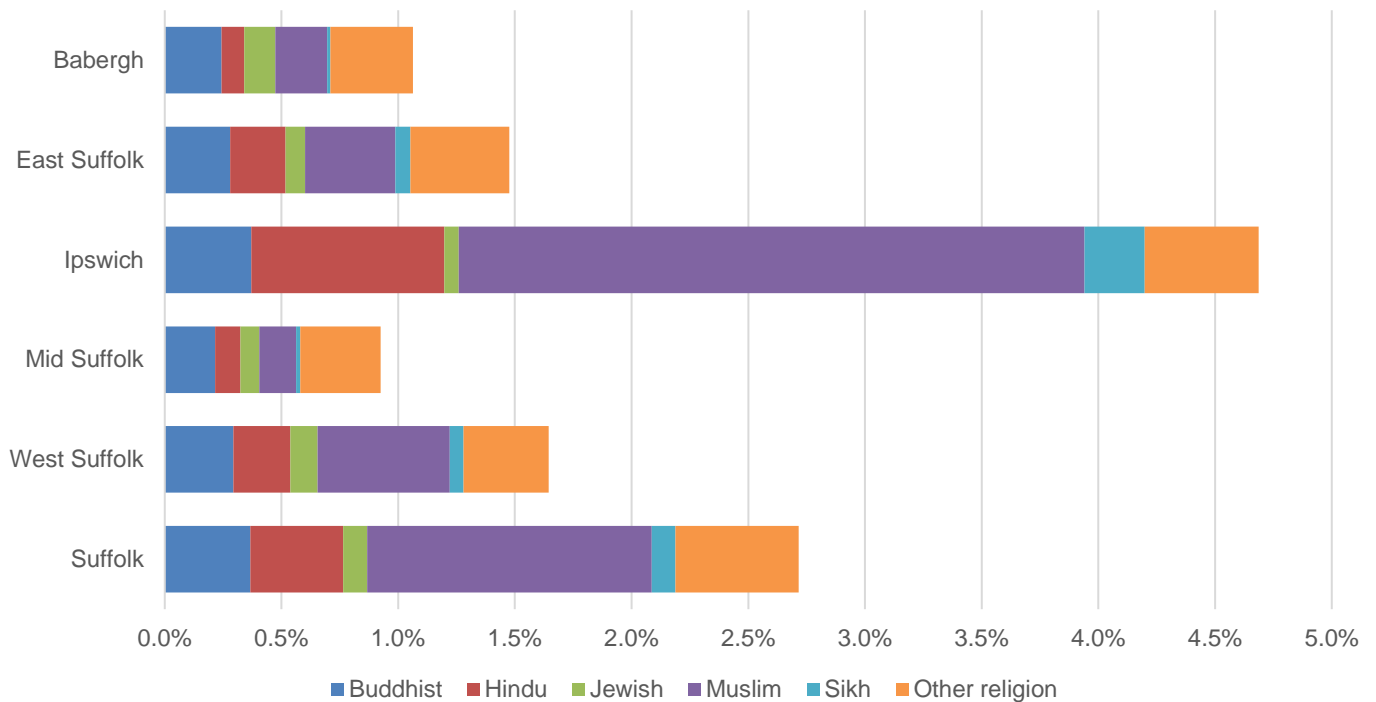


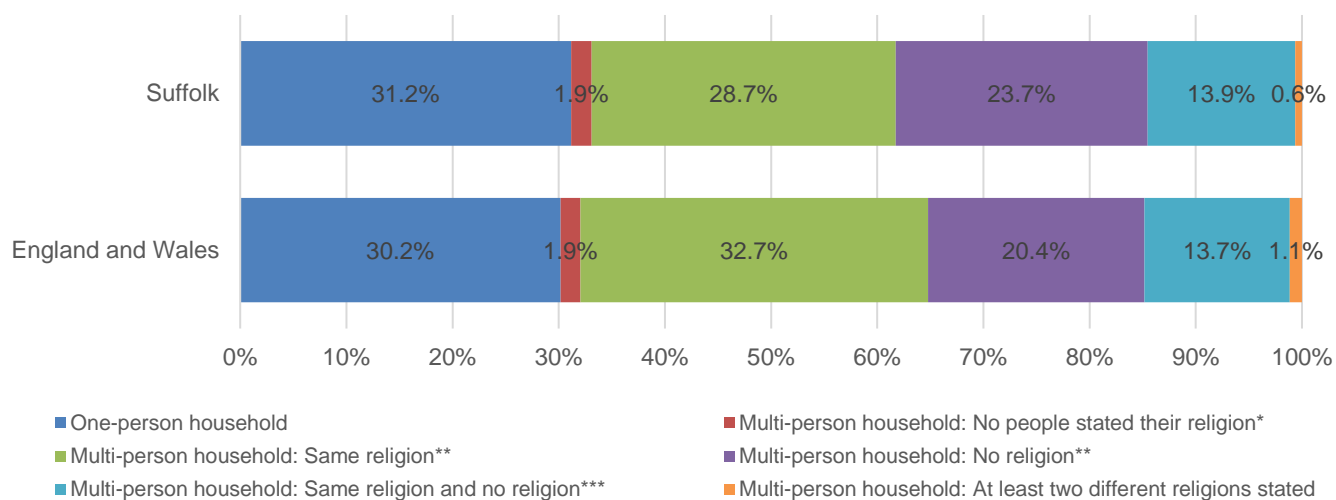
Chart 2: Percentage of resident population by religion other than Christianity, Suffolk's Districts and Boroughs and Suffolk, 2021 Census



- Ipswich has the most diverse population in terms of religion of any of our Districts and Boroughs.
- 4.7% of the population of Ipswich has a religion other than Christianity. The Borough has the largest proportion of the population of Buddhists, Hindus, Muslims, Sikhs and of other religion of any of our Local Authorities.
- Babergh has the largest proportion of Jewish residents among Suffolk's Districts, but it is still just 0.13% of the population of the District.
- 10.6% of the population of England and Wales practices a religion other than Christianity. 6.5% of the population are Muslim, 1.7% Hindu, 0.9% Sikh, 0.6% other religion, 0.5% Buddhist and 0.5% Jewish.

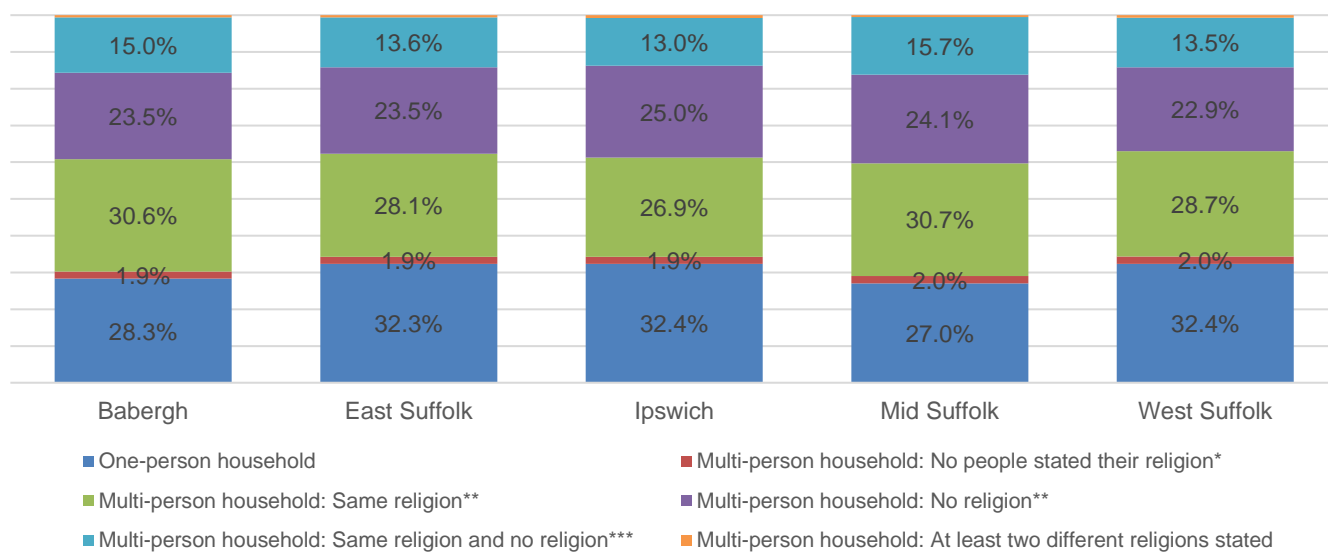
Multiple religions in household

Chart 3: Multiple religions in household, Suffolk and England and Wales, 2021 Census



- Suffolk has a similar composition of multiple religion households to England and Wales as a whole.
- A slightly larger proportion of multi-person households in the county have no religion; 23.7% in Suffolk and 20.4% nationally.
- Less than 1% of Suffolk multi-person households contain inhabitants of more than one religion.
- There is little variation between Suffolk's Districts and Boroughs.
- There is no comparable data from the 2011 Census.

Chart 4: Multiple religions in household, Suffolk's Districts and Boroughs, 2021 Census



* at least one person has stated a religion but the household may include people who did not state their religion

** household may include people who did not state their religion

*** household may include people with no religion and who did not state their religion

Language

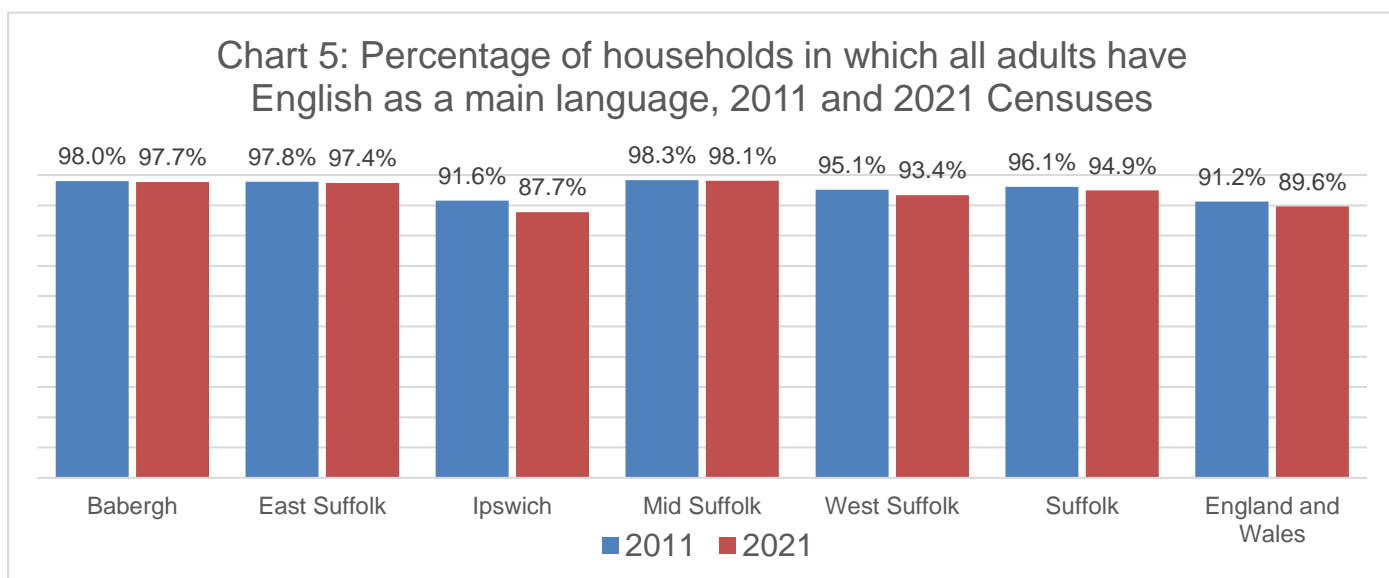
Household language

Table 3: Main language of adults in a household, Suffolk and England and Wales, 2021 Census

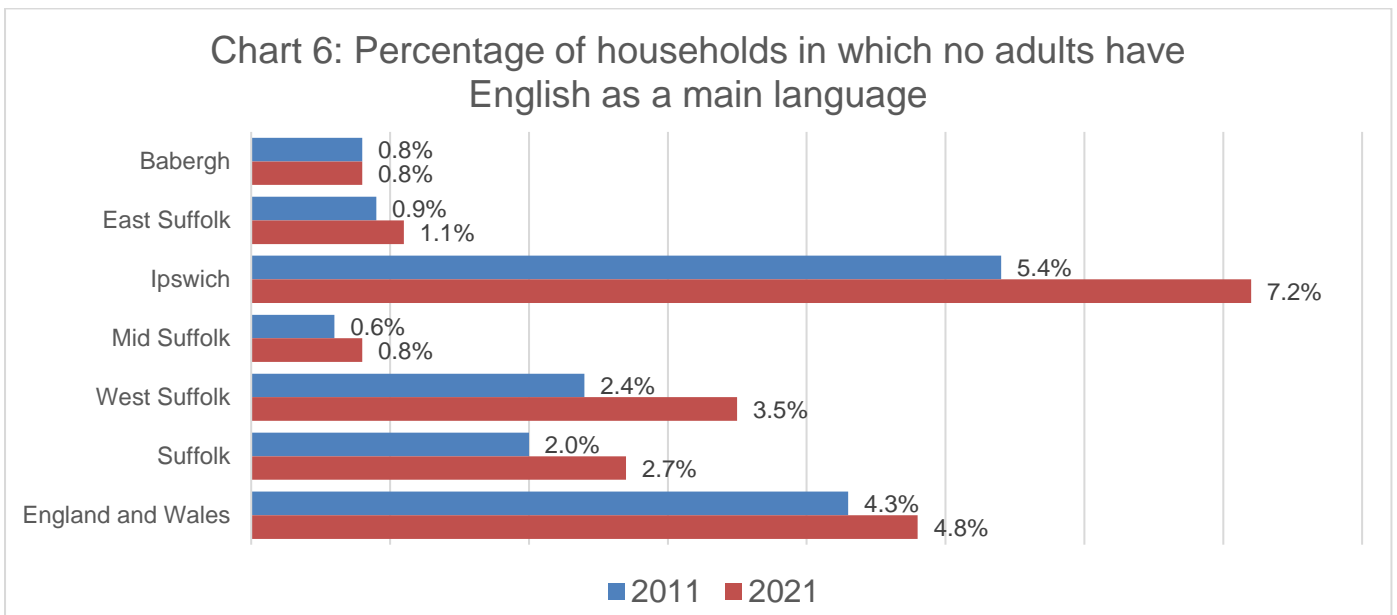
	Suffolk				England and Wales
	2011	2021	Change	% change	% change
Total: All households	310,745	333,544	22,799	7.3%	6.1%
All adults in household have English* as a main language	298,699	316,387	17,688	5.9%	4.2%
At least one but not all adults in household have English* as a main language	4,953	5,896	943	19.0%	19.4%
No adults in household, but at least one person aged 3 to 15 years, has English* as a main language	855	2,343	1,488	174.0%	81.6%
No people in household have English* as a main language	6,238	8,918	2,680	43.0%	19.8%

*English or Welsh for residents in Wales, relevant for the England and Wales percentages

- Over 316,000 Suffolk households (just under 95%) contain only adults who have English as a first language. The number of such households has increased by 5.9% since 2011, but as a proportion of all households it has fallen by 1.2 percentage points.
- English is not the first language for any person in around 9,000 households in Suffolk, an increase of 2,680 (43%) since 2011. It is important to note that this does not mean that people cannot speak English at all, only that it is not their first language. See the proficiency in English language section for data on this.
- The largest increase of any of the categories presented here is in households where no adults have English as a main language, but it is considered to be a main language for a child aged 3 to 15 years in the household.
- Across England and Wales, the percentage of households in which all adults have English as their first language fell by 4.9% over the past decade.



- English is the first language among all adults in around 97-98% of households in Babergh, East Suffolk and Mid Suffolk. These figures have dipped by less than 0.5% since 2011.
- The biggest change across Suffolk's Districts and Boroughs was in Ipswich, where the percentage of households in which all adults have English as their first language dropped by 2.9% to 87.7% in 2021, around two percentage points below the England and Wales average.
- The percentage of households in which all adults have English as a main language in Ipswich has fallen by 3.9 percentage points since the 2011 Census. In 2011, the Ipswich figure was slightly higher than that for England and Wales, but is now almost two percentage points lower, reflecting the changes in the composition of Ipswich's population over the decade.
- There has been little change in the percentage of households in which all adults have English as a main language in Babergh, East Suffolk and Mid Suffolk.



- English is not a main language for any of the adults in around 1 in 14 households in Ipswich in 2021, up from 1 in 20 in 2011. The Ipswich figure was already above the England and Wales average in 2011 and has also increased by a much larger figure over the past decade.
- West Suffolk has the next highest percentage of households in which no adults have English as a main language (3.5%). There was also an above average increase of 1.1 percentage points in the District since 2011.
- A very low proportion of households in Babergh, East Suffolk and Mid Suffolk do not have an adult living there for whom English is a main language in 2021, and these figures have seen little change since 2011.

Main language (detailed)

Table 4: All usual residents aged 3 years and over by main language, count of persons and percentage change in Suffolk and percentage change in England and Wales, 2011 and 2021 Censuses

	Suffolk				England and Wales
	2011	2021	Change	% change	% change
Total: All usual residents aged 3 years and over	702,699	739,026	36,327	5.2%	6.9%
English (English or Welsh in Wales)	679,495	705,408	25,913	3.8%	5.5%
Welsh or Cymraeg (in England only)	65	47	-18	-27.7%	-10.9%
Other UK language	39	39	0	0.0%	-11.1%
French	604	429	-175	-29.0%	-18.2%
Portuguese	2,106	3,345	1,239	58.8%	68.4%
Spanish	579	825	246	42.5%	78.9%
Other European language (EU)	10,739	18,038	7,299	68.0%	56.6%
Other European language (non EU)	342	325	-17	-5.0%	13.7%
Other European language (EU & non-EU)*		96	96		
Other European language (non-national)	5	0	-5	-100.0%	19.5%
Russian	629	848	219	34.8%	35.5%
Turkish	523	798	275	52.6%	13.6%
Arabic	252	462	210	83.3%	28.1%
West or Central Asian language	1,018	1,314	296	29.1%	18.8%
South Asian language	2,922	3,698	776	26.6%	6.0%
East Asian language	2,459	2,523	64	2.6%	-6.7%
Oceanic or Australian language	36	30	-6	-16.7%	-3.9%
North or South American language	1	1	0	0.0%	-93.4%
Caribbean Creole	3	14	11	366.7%	248.6%
African language	541	515	-26	-4.8%	-16.0%
Sign language	227	241	14	6.2%	21.7%
Other language	114	30	-84	-73.7%	-58.4%

*Not included in 2011, people who gave another language were grouped in the "other language" category.

- Other than English, European languages from EU countries other than French, Portuguese and Spanish account for the largest number of other specific main languages of Suffolk residents.
- More than 18,000 people in the county gave another EU language as their main language. Of these, 5,761 selected Polish, 5,521 Romanian, 2,479 Lithuanian, 910 Hungarian and 874 Bulgarian.
- There are almost 4,000 people in Suffolk for whom a South Asian language is the main language, an increase of 26.6% since 2011. The most commonly spoken South Asian languages in the county are Bengali (with Sylheti and Chatgaya) (841 people), Malayalam (802 people) and Tamil (554 people).
- The number of people in Suffolk whose main language is East Asian has remained fairly stable from 2011 to 2021. Of the 2,523 people with a primary language from East Asia, the

most commonly spoken individual language is Tagalog or Filipino, with 817 speakers in county in 2021.

- There has been an increase in speakers of most of these languages in Suffolk.
- [The full table of all main languages in Suffolk including our Districts and Boroughs in 2021 is available via the link here and below. The link opens a Microsoft Excel file.](https://www.nomisweb.co.uk/livelinks/16048.xlsx)
<https://www.nomisweb.co.uk/livelinks/16048.xlsx>

Table 5: Usual resident population aged 3 years and over by main language, 2021 Census

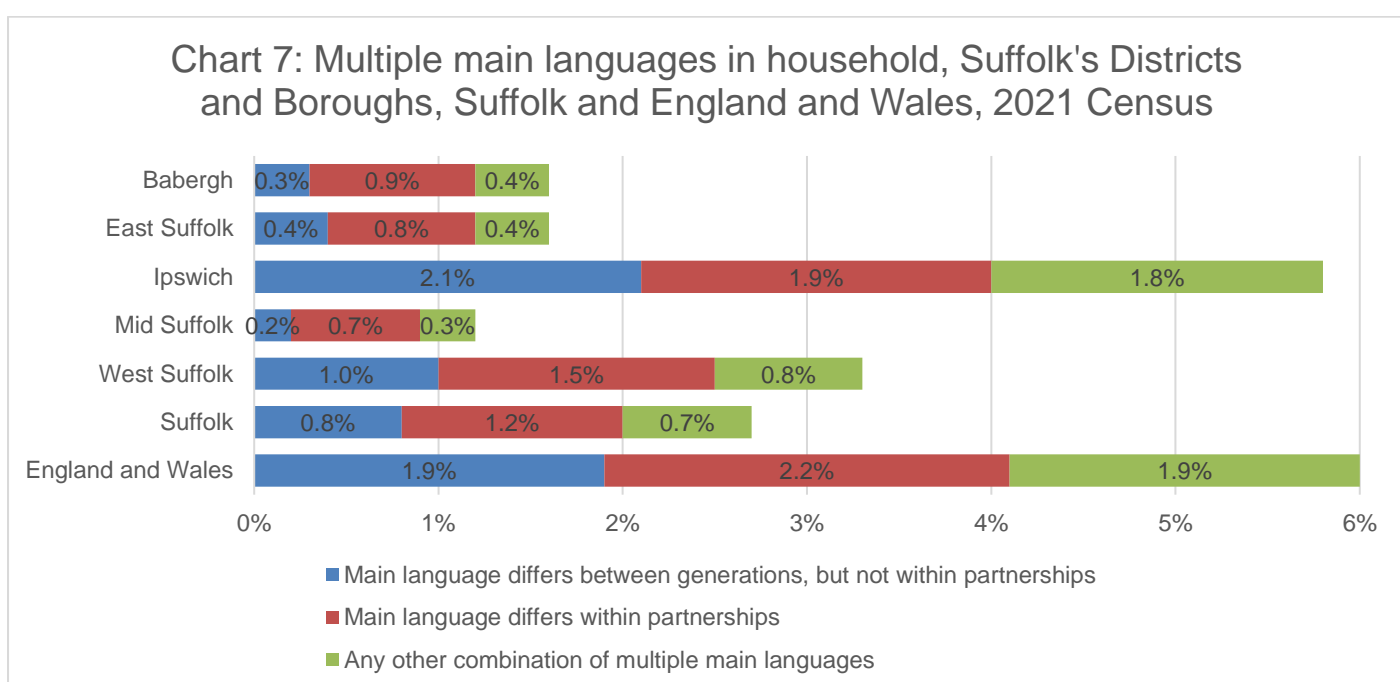
	Babergh		East Suffolk		Ipswich		Mid Suffolk		West Suffolk		Suffolk		Englan d and Wales
	Persons	%	Persons	%	Persons	%	Persons	%	Persons	%	Persons	%	%
Total: All usual residents aged 3 years and over	90,055		239,994		134,780		100,064		174,136		739,026		
English (English or Welsh in Wales)	88,494	98.3%	235,021	97.9%	118,944	88.3%	98,582	98.5%	164,367	94.4%	705,408	95.5%	91.1%
Welsh or Cymraeg (in England only)	5	0.0%	19	0.0%	3	0.0%	6	0.0%	11	0.0%	47	0.0%	0.0%
Other UK language	5	0.0%	6	0.0%	18	0.0%	0	0.0%	11	0.0%	39	0.0%	0.0%
French	51	0.1%	119	0.0%	85	0.1%	29	0.0%	145	0.1%	429	0.1%	0.2%
Portuguese	77	0.1%	470	0.2%	1,664	1.2%	94	0.1%	1,039	0.6%	3,345	0.5%	0.4%
Spanish	60	0.1%	156	0.1%	242	0.2%	68	0.1%	299	0.2%	825	0.1%	0.4%
Other European language (EU)	815	0.9%	2,393	1.0%	8,553	6.3%	769	0.8%	5,504	3.2%	18,038	2.4%	3.2%
Other European language (non EU)	20	0.0%	43	0.0%	132	0.1%	17	0.0%	115	0.1%	325	0.0%	0.1%
Other European language (EU and non-EU)	6	0.0%	19	0.0%	40	0.0%	2	0.0%	29	0.0%	96	0.0%	0.0%
Other European language (non-national)	0	0.0%	0	0.0%	0	0.0%	0	0.0%	0	0.0%	0	0.0%	0.0%
Russian	36	0.0%	106	0.0%	453	0.3%	27	0.0%	226	0.1%	848	0.1%	0.2%
Turkish	102	0.1%	146	0.1%	282	0.2%	54	0.1%	214	0.1%	798	0.1%	0.2%
Arabic	13	0.0%	50	0.0%	306	0.2%	17	0.0%	77	0.0%	462	0.1%	0.4%
West or Central Asian language	18	0.0%	87	0.0%	1,047	0.8%	10	0.0%	154	0.1%	1,314	0.2%	0.4%
South Asian language	122	0.1%	609	0.3%	1,860	1.4%	158	0.2%	950	0.5%	3,698	0.5%	2.4%
East Asian language	161	0.2%	581	0.2%	833	0.6%	162	0.2%	782	0.4%	2,523	0.3%	0.6%
Oceanic or Australian language	1	0.0%	10	0.0%	0	0.0%	9	0.0%	10	0.0%	30	0.0%	0.0%
North or South American language	0	0.0%	0	0.0%	0	0.0%	0	0.0%	1	0.0%	1	0.0%	0.0%
Caribbean Creole	1	0.0%	3	0.0%	5	0.0%	1	0.0%	7	0.0%	14	0.0%	0.0%
African language	35	0.0%	89	0.0%	213	0.2%	36	0.0%	142	0.1%	515	0.1%	0.4%
Sign language	32	0.0%	60	0.0%	87	0.1%	20	0.0%	45	0.0%	241	0.0%	0.0%
Other language	1	0.0%	7	0.0%	13	0.0%	3	0.0%	8	0.0%	30	0.0%	0.0%

Multiple main languages in household

Table 6: Multiple main languages in household, count of households and percentage of total households in Suffolk and percentage of total households in England and Wales, 2021 Census

	Suffolk		England and Wales
	Household count	Percentage	Percentage
One-person household	103,942	31.2%	30.2%
All household members have the same main language	220,662	66.2%	63.8%
Main language differs between generations, but not within partnerships	2,680	0.8%	1.9%
Main language differs within partnerships	3,865	1.2%	2.2%
Any other combination of multiple main languages	2,396	0.7%	1.9%

- Suffolk has a more uniform profile of main languages within households than England and Wales as a whole.
- One-person households account for 31.2% of all households in Suffolk so cannot have multiple main languages.
- All household members have the same main language in just over 66% of households in Suffolk, compared to 63.8% nationally.
- Other combinations of main languages exist in a much smaller number of households in Suffolk. The main language differs between generations, but not within partnerships, in 2,680 households (0.8%) in Suffolk, around half the proportion across England and Wales.
- The main language differs within partnerships in 1.2% of households in Suffolk, compared to 2.2% nationally.
- There is a different combination of multiple main languages in 2,396 households in Suffolk (0.7%). In England and Wales, such households account for 1.9% of the total.
- There is no comparable data from the 2011 Census.



Proficiency in English language

Table 7: Proficiency in English language in Suffolk and England and Wales, count of persons and percentage of total persons, 2011 and 2021 Censuses

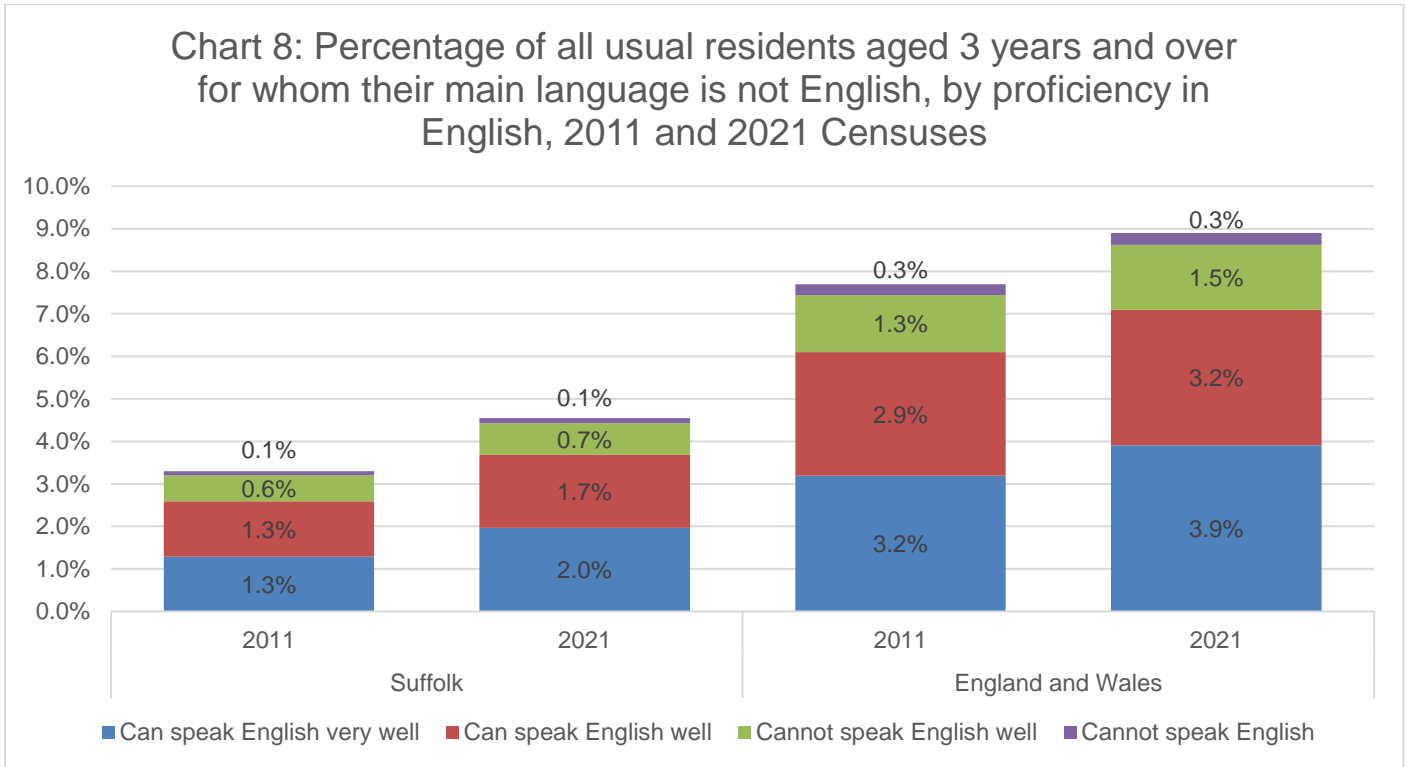
	2011			2021		
	Suffolk		England and Wales	Suffolk		England and Wales
	Persons	%	%	Persons	%	%
Total: All usual residents aged 3 years and over	702,699			739,020		
Main language is English	679,495	96.7%	92.3%	705,408	95.5%	91.1%
Main language is not English	23,204	3.3%	7.7%	33,612	4.5%	8.9%
Main language is not English: Can speak English very well	9,080	1.3%	3.2%	14,507	2.0%	3.9%
Main language is not English: Can speak English well	9,104	1.3%	2.9%	12,767	1.7%	3.2%
Main language is not English: Cannot speak English well	4,292	0.6%	1.3%	5,450	0.7%	1.5%
Main language is not English: Cannot speak English	728	0.1%	0.3%	888	0.1%	0.3%

- English is the main language for 705,408 of Suffolk's 739,020 usual residents aged 3 years and over.
- The percentage of residents for whom English is the main language in the county has declined by 1.2 percentage points since 2011, but still accounts for 95.5% of the population.
- English is the main language for a smaller proportion of the population of England and Wales, but the extent of change seen in Suffolk since 2011 is also reflected nationally.
- The number of people in Suffolk for whom the main language is not English has increased by 10,408 since 2011 (44.9%) to 33,612, now accounting for 4.5% of the population (up from 3.3% in 2011).

Table 8: Proficiency in English language in Suffolk, count of persons and percentage change, and percentage change in England and Wales, 2011 and 2021 Censuses

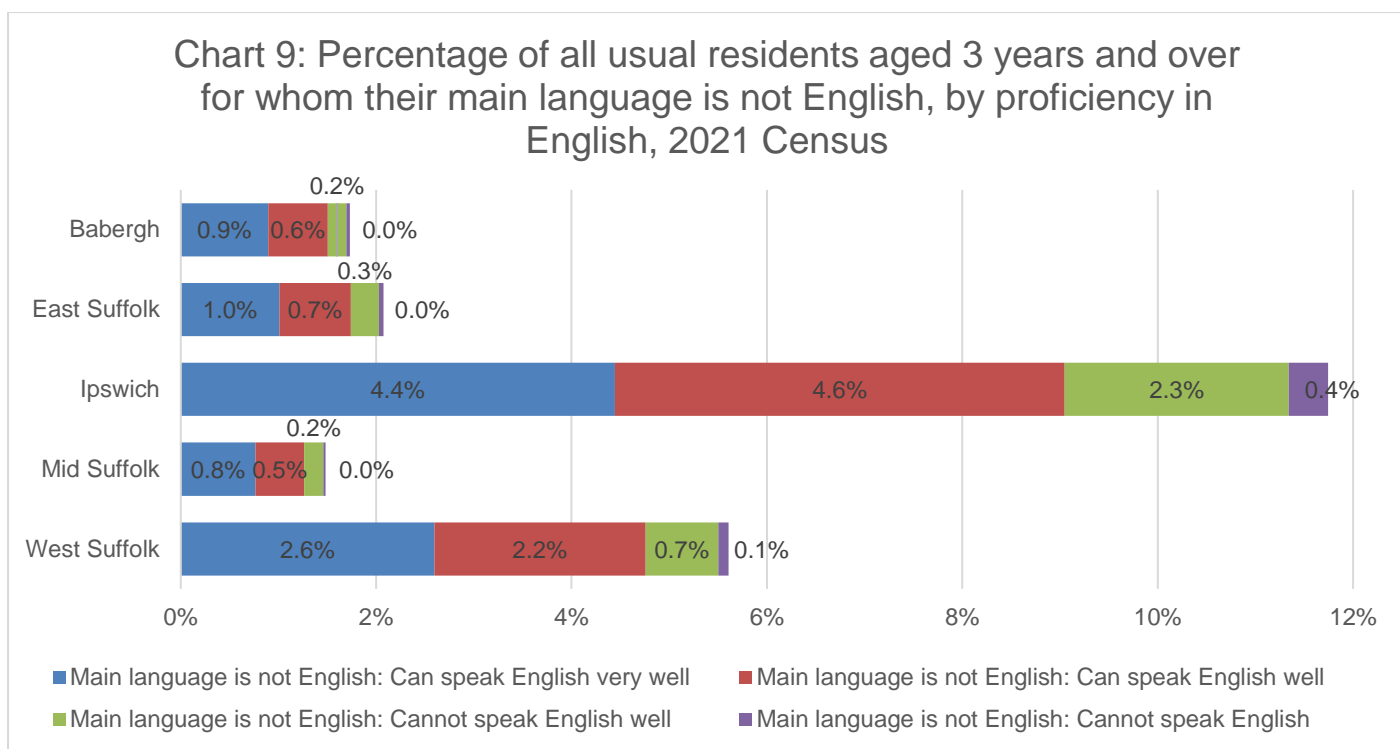
	Suffolk				England and Wales
	2011	2021	Change	% change	% change
Total: All usual residents aged 3 years and over	702,699	739,020	36,321	5.2%	6.9%
Main language is English	679,495	705,408	25,913	3.8%	5.5%
Main language is not English	23,204	33,612	10,408	44.9%	23.6%
Main language is not English: Can speak English very well	9,080	14,507	5,427	59.8%	31.0%
Main language is not English: Can speak English well	9,104	12,767	3,663	40.2%	17.3%
Main language is not English: Cannot speak English well	4,292	5,450	1,158	27.0%	21.2%
Main language is not English: Cannot speak English	728	888	160	22.0%	16.8%

- While the number and percentage of the population for whom English is not their first language has increased since 2011, the change in those who cannot speak English or cannot speak it well has not increased at the same rate.
- There has been a 44.9% increase in Suffolk residents for whom English is not their first language (10,408 people), but only a 22% rise in those who cannot speak English (160 people).



- English is not the main language for 4.5% of Suffolk’s population in 2021, around half the level seen across England and Wales.
- Just 0.1% of Suffolk’s population (888 people) cannot speak English in 2021. This is an increase of 160 people on the 2011 figure but the percentage of the population as a whole remains the same. 0.3% of the population of England and Wales cannot speak English.
- A further 0.7% of Suffolk’s population cannot speak English well in 2021, a slight rise on the 0.6% in 2011.

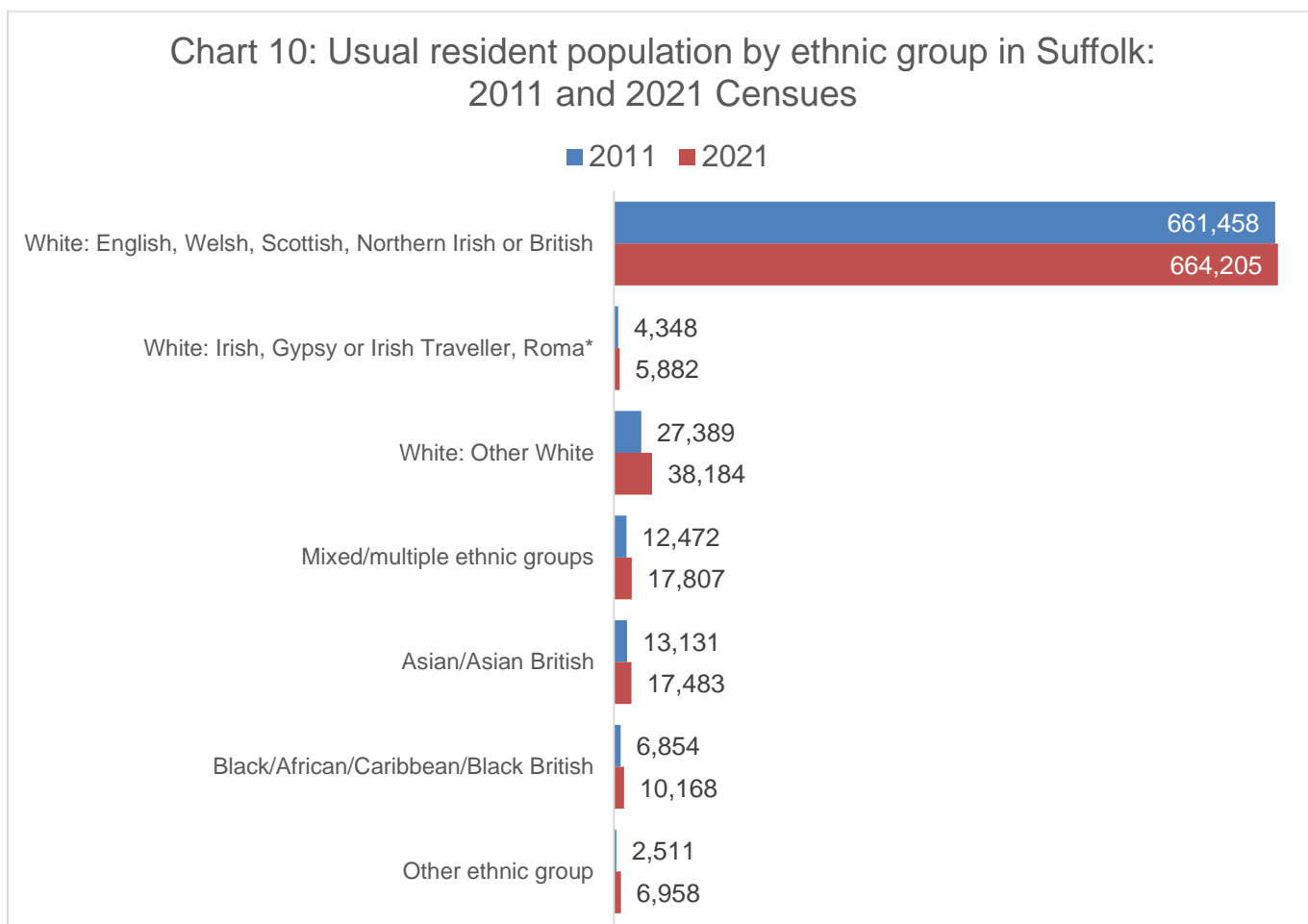
Districts and Boroughs



- English is not the main language for almost 12% of the population of Ipswich, though only 0.4% cannot speak English at all.
- A very small proportion of Babergh, East Suffolk and Mid Suffolk do not consider English to be their main language, and in each case less than 0.1% of people cannot speak English at all.
- English is not the main language for 5.6% of West Suffolk’s population in 2021. 0.8% of the population cannot speak English or cannot speak it well.

Ethnic group

Ethnic group



*This group includes White Irish, White Gypsy or Irish Traveller and White Roma ethnic groups in 2021. In 2011, Roma were not split out as a separate group, so are included in Gypsy or Irish Traveller or White: Other White.

Definition: The ethnic group that the person completing the census feels they belong to. This could be based on their culture, family background, identity or physical appearance.

Respondents could choose one out of 19 tick-box response categories, including write-in response options.

- At the time of the 2021 Census, there were 664,205 White English, Welsh, Scottish, Northern Irish or British usually resident in Suffolk, 87.3% of the county's population.
- Across England and Wales as a whole, 74.4% of the population is White English, Welsh, Scottish, Northern Irish or British.
- 96,482 Suffolk residents are of other ethnic groups. 5,882 are White Irish, Gypsy or Irish Traveller or Roma, 38,184 are other White, 17,807 are of mixed/multiple ethnic groups, 17,483 are Asian/Asian British, 10,168 are Black/African/Caribbean/Black British and 6,958 are of another ethnic group. The breakdown is shown in chart 10 above and table 9 below.

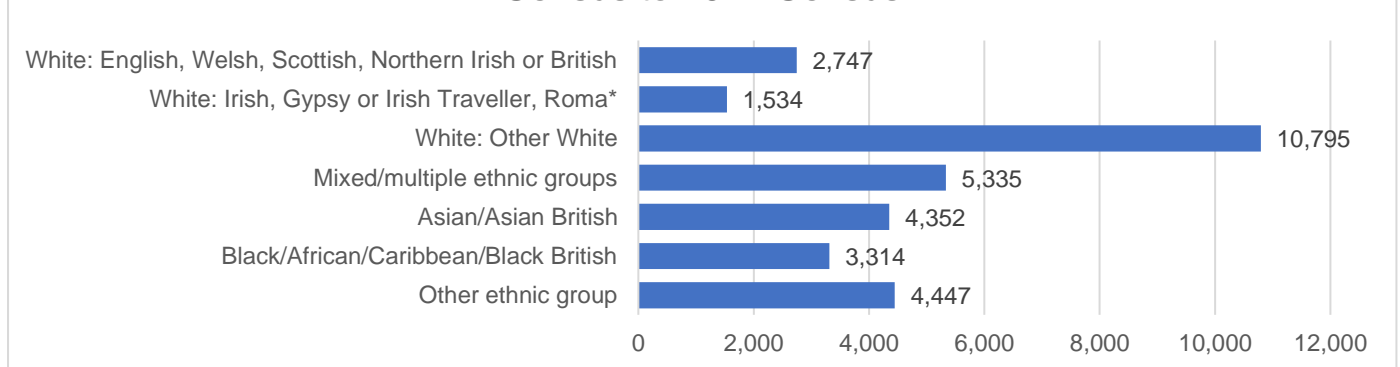
Table 9: Usual resident population by ethnic group in Suffolk: 2011 and 2021 Censuses, including change and percentage change

	Suffolk			
	2011	2021	Change	% change
White: English, Welsh, Scottish, Northern Irish or British	661,458	664,205	2,747	0.4%
White: Irish, Gypsy or Irish Traveller, Roma*	4,348	5,882	1,534	35.3%
White: Other White	27,389	38,184	10,795	39.4%
Mixed/multiple ethnic groups	12,472	17,807	5,335	42.8%
Asian/Asian British	13,131	17,483	4,352	33.1%
Black/African/Caribbean/Black British	6,854	10,168	3,314	48.4%
Other ethnic group	2,511	6,958	4,447	177.1%
Total	728,163	760,687	32,524	4.5%

*This group includes White Irish, White Gypsy or Irish Traveller and White Roma ethnic groups in 2021. In 2011, Roma were not split out as a separate group, so are included in Gypsy or Irish Traveller or White: Other White.

- The usual resident population of every ethnic group in Suffolk has increased from 2011 to 2021.
- The largest population increase over the past decade was in the other white group. There were 38,184 other white people resident in Suffolk in 2021; 10,795 more than in 2011. This group accounts for a third of the total population increase in Suffolk over the past decade.
- Other White residents now make up 5% of Suffolk’s population, an increase of 1.3 percentage points since 2011.
- The largest percentage increase of any ethnic group was among the “other ethnic group” population. The Suffolk population in this group more than doubled from 2011 to 2021.
- The population of white Irish, Gypsy or Irish Traveller or Roma and Asian/Asian British in Suffolk grew by around a third between the two Censuses, rising from 4,348 in 2011 to 5,882 in 2021.
- Suffolk is now home to almost 18,000 people of mixed/multiple ethnic background. The multiple/mixed ethnic population in the county increased by more than 5,000 from 2011 to 2021, a rise of 42.8%.
- Just over 10,000 Black/African/Caribbean/Black British people are resident in Suffolk in 2021; growth of almost 50% over the past decade.

Chart 11: Suffolk: change in population by ethnic group, 2011 Census to 2021 Census



*This group includes White Irish, White Gypsy or Irish Traveller and White Roma ethnic groups in 2021. In 2011, Roma were not split out as a separate group, so are included in Gypsy or Irish Traveller or White: Other White.

Table 10: Usual resident population by ethnic group in Suffolk and England and Wales: 2011 and 2021 Censuses, percentage of total population

	Suffolk		England and Wales	
	2011	2021	2011	2021
White: English, Welsh, Scottish, Northern Irish or British	90.8%	87.3%	80.5%	74.4%
White: Irish, Gypsy or Irish Traveller, Roma*	0.6%	0.8%	1.0%	1.1%
White: Other White	3.8%	5.0%	4.4%	6.2%
Mixed/multiple ethnic groups	1.7%	2.3%	2.2%	2.9%
Asian/Asian British	1.8%	2.3%	7.5%	9.3%
Black/African/Caribbean/Black British	0.9%	1.3%	3.3%	4.0%
Other ethnic group	0.3%	0.9%	1.0%	2.1%

*This group includes White Irish, White Gypsy or Irish Traveller and White Roma ethnic groups in 2021. In 2011, Roma were not split out as a separate group, so are included in Gypsy or Irish Traveller or White: Other White.

- Suffolk’s population remains less diverse than that of England and Wales overall.
- The percentage of the Suffolk population that are not White English, Welsh, Scottish, Northern Irish or British has increased from 9.2% in 2011 to 12.7% in 2021, but remains less than half of the England and Wales figure of 25.6%.
- White Irish, Gypsy or Irish Traveller and Roma communities account for a similar proportion of the population in Suffolk (0.8%) to across England and Wales (1.1%) as a whole.
- The Asian/Asian British and Black/African/Caribbean/Black British ethnic groups in particular represent a much smaller proportion of the Suffolk population than nationally.
- Around 1 in 43 people in Suffolk is Asian/Asian British, compared to 1 in 11 in England and Wales.
- The proportion of the population of England and Wales that is Black/African/Caribbean/Black British (4.0%) is about three times higher than in Suffolk (1.3%).
- 1 in 20 Suffolk residents on Census day 2021 were other White, compared to 1 in 16 in England and Wales.
- Asian/Asian British people account for around 2.3% of the population of Suffolk in 2021, compared to 9.3% across England and Wales.
- Other ethnic groups account for around 1 in 100 Suffolk residents and 1 in 50 people nationwide.

Gypsy, Irish Traveller and Roma population

	Suffolk			
	2011	2021	Change	% change
White: Irish	3,744	3,990	246	6.6%
White: Gypsy or Irish Traveller	604	905	301	49.8%
White: Roma		987		
White: Other White	27,389	38,184	10,795	39.4%

- As noted above, the 2021 Census included a new Roma category next to the Gypsy or Irish Traveller tick-box within the White category. This means the Roma population is available separately in 2021 but not in 2011.
- At the time of the 2021 Census, the White Gypsy or Irish Traveller population in Suffolk was just over 900, an increase of almost 50% on the 2011 figure.

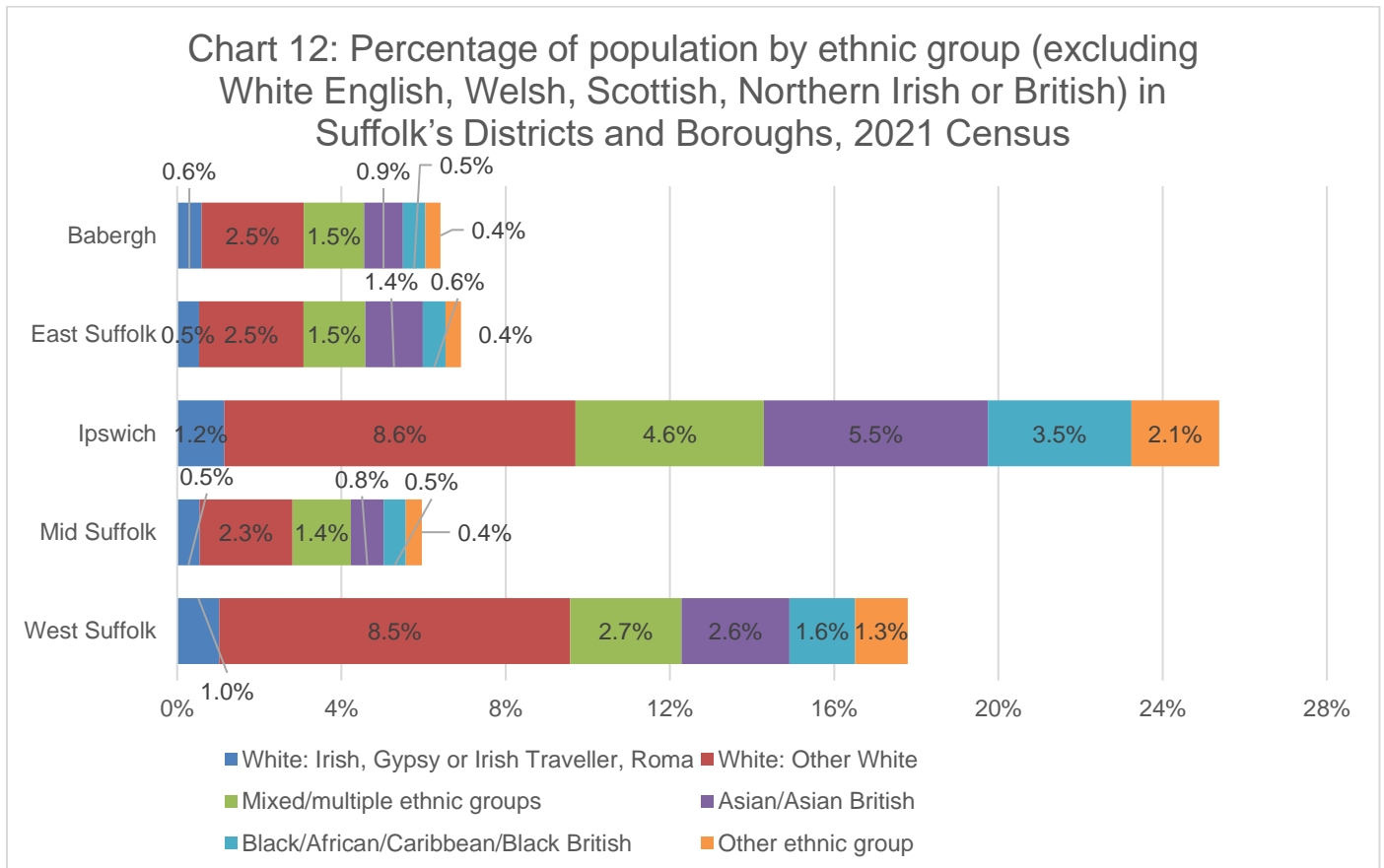
- In 2021, there were almost 1,000 people that feel they belong to the White Roma group living in Suffolk.
- The White Irish population in the county has remained relatively stable over this time. The 6.6% increase seen from 2011 to 2021 means that the population has grown by a greater proportion than the White English, Welsh, Scottish, Northern Irish or British population.

Districts and Boroughs

Table 11: Population by ethnic group in Suffolk’s Districts and Boroughs, 2021 Census

	Babergh	East Suffolk	Ipswich	Mid Suffolk	West Suffolk
White: English, Welsh, Scottish, Northern Irish or British	86,418	229,063	104,208	96,581	147,935
White: Irish, Gypsy or Irish Traveller, Roma	547	1,318	1,606	562	1,850
White: Other White	2,304	6,246	11,943	2,320	15,371
Mixed/multiple ethnic groups	1,351	3,707	6,409	1,463	4,880
Asian/Asian British	875	3,447	7,611	821	4,731
Black/African/Caribbean/Black British	503	1,357	4,882	553	2,873
Other ethnic group	344	922	2,984	401	2,308
Total	92,342	246,060	139,643	102,701	179,948
Ethnically diverse total	3,073	9,433	21,886	3,238	14,792
Non-White British total	5,924	16,997	35,435	6,120	32,013

*This group includes White Irish, White Gypsy or Irish Traveller and White Roma ethnic groups



*This group includes White Irish, White Gypsy or Irish Traveller and White Roma ethnic groups

- Ipswich has the most diverse population of Suffolk's Districts and Boroughs. Ipswich has the largest percentage of residents in each of the ethnic groups other than White British (White Irish, Gypsy or Irish Traveller, Roma, other White, mixed/multiple ethnic groups, Asian/Asian British, Black/African/Caribbean/Black British and other ethnic group).
- Around a quarter of Ipswich's population is not White English, Welsh, Scottish, Northern Irish or British, very similar to the national proportion, albeit with a different composition.
- A larger proportion of Ipswich's population is other White and mixed/multiple ethnic groups than the England and Wales average.
- The populations of Babergh, East Suffolk and Mid Suffolk have a similar ethnic composition. White English, Welsh, Scottish, Northern Irish or British people account for 93%-94% of the population in each of these Local Authorities.
- West Suffolk's other White population (15,371) is higher than that of Ipswich (11,943) and represents a similar proportion of the overall population of the Local Authority. West Suffolk also has a higher proportion of other ethnic groups than the other predominantly rural Districts in Suffolk. The United States Air Force (USAF) population in the area is a key reason for this.

Table 12: Percentage of population by ethnic group in Suffolk's Districts and Boroughs, 2021 Census

	Babergh	East Suffolk	Ipswich	Mid Suffolk	West Suffolk	Suffolk	England and Wales
White: English, Welsh, Scottish, Northern Irish or British	93.6%	93.1%	74.6%	94.0%	82.2%	87.3%	74.4%
White: Irish, Gypsy or Irish Traveller, Roma*	0.6%	0.5%	1.2%	0.5%	1.0%	0.8%	1.1%
White: Other White	2.5%	2.5%	8.6%	2.3%	8.5%	5.0%	6.2%
Mixed/multiple ethnic groups	1.5%	1.5%	4.6%	1.4%	2.7%	2.3%	2.9%
Asian/Asian British	0.9%	1.4%	5.5%	0.8%	2.6%	2.3%	9.3%
Black/African/Caribbean/Black British	0.5%	0.6%	3.5%	0.5%	1.6%	1.3%	4.0%
Other ethnic group	0.4%	0.4%	2.1%	0.4%	1.3%	0.9%	2.1%

*This group includes White Irish, White Gypsy or Irish Traveller and White Roma ethnic groups

Districts and Boroughs: Gypsy, Irish Traveller and Roma population

	Babergh		East Suffolk		Ipswich		Mid Suffolk		West Suffolk	
	2011	2021	2011	2021	2011	2021	2011	2021	2011	2021
White: Irish	486	481	992	1,095	610	587	345	442	1,311	1,387
White: Gypsy or Irish Traveller	51	40	142	146	149	356	76	93	186	268
White: Roma*		26		77		663		27		195

- White Gypsy or Irish Traveller and White Roma communities live in all of Suffolk's Districts and Boroughs.

- The largest Gypsy or Irish Traveller communities are in Ipswich and West Suffolk, and these areas have also seen the most significant increases in their populations from 2011 to 2021.
- In Ipswich, the Gypsy or Irish Traveller population has more than doubled since the last Census. Over 350 people who belong to this ethnic group lived in the Borough at the time of the 2021 Census.
- West Suffolk's Gypsy or Irish Traveller population has increased by about 80 people (44%) since the last Census.
- Mid Suffolk's Gypsy or Irish Traveller population increased by 22% from 2011 to 2021, while the Babergh population decreased by a similar amount.
- The Gypsy or Irish Traveller population in East Suffolk in 2021 was 146, and has remained fairly stable over the past decade.
- The 2021 Census included a new Roma category next to the Gypsy or Irish Traveller tick-box within the White category. This means the Roma population is available separately in 2021 but not in 2011.
- Ipswich has by far the largest Roma population of any of our Districts and Boroughs (663 in 2021), followed by West Suffolk (195), East Suffolk (77), Mid Suffolk (27) and Babergh (26).

The maps on the following pages show the percentage of the population that are ethnically diverse (mixed/multiple ethnic groups, Asian/Asian British, Black/African/Caribbean/Black British and other ethnic groups), followed by individual maps of the first three of these groups.

The impact of military personnel on the ethnic diversity of Suffolk's population is clear; Lakenheath, Mildenhall, Honington, Sutton Heath and Wattisham all show higher percentages of ethnically diverse people.

Ipswich is the most ethnically diverse of any of our towns. The distribution of different ethnic groups around the town differs slightly, but in each case a higher percentage of the population comes from different ethnic backgrounds in Ipswich compared to most other parts of the county. There are smaller ethnically diverse communities in other main and market towns.

The west of the county in general has greater ethnic diversity.

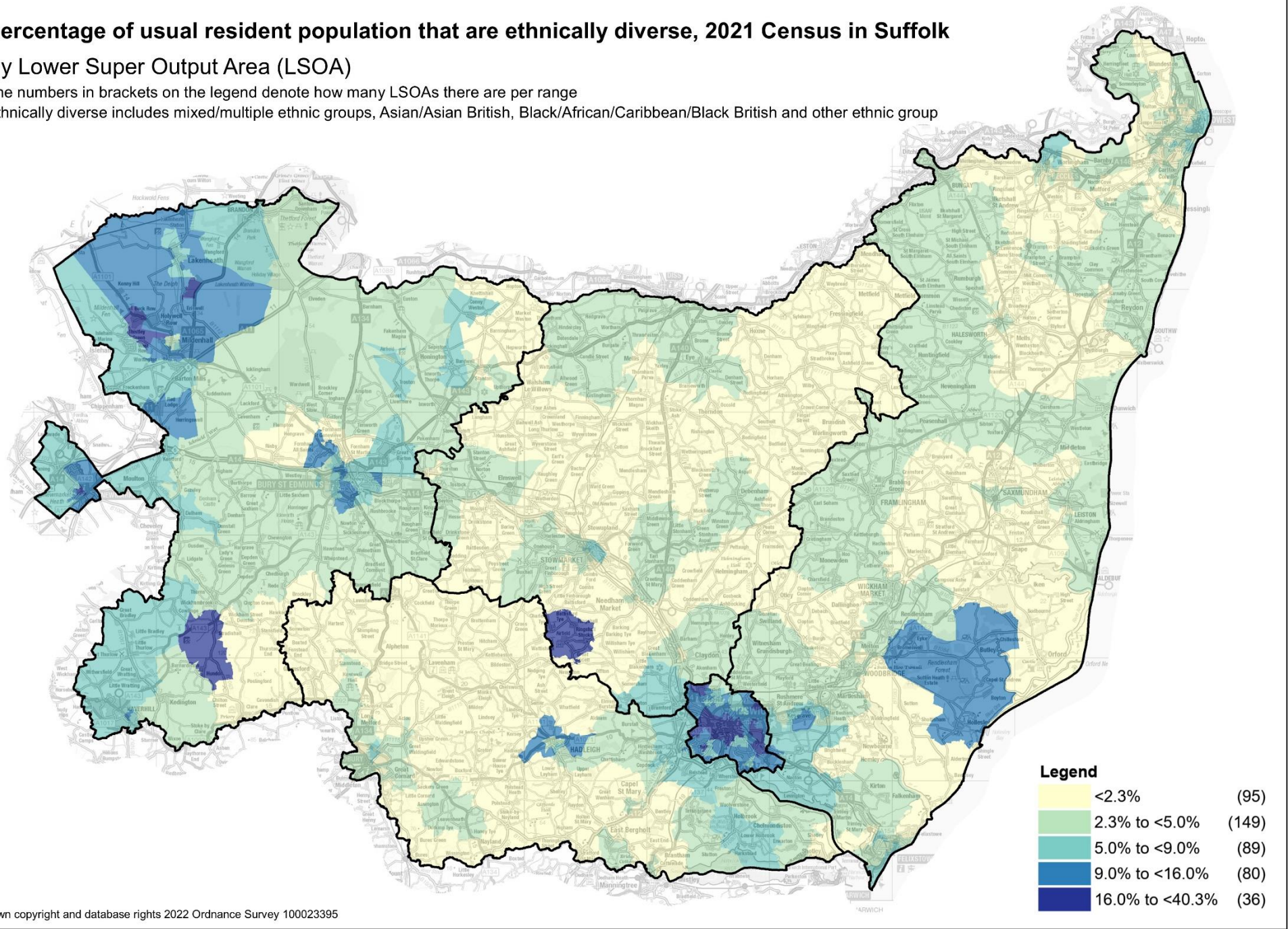
The Lower Super Output Areas containing His Majesty's Prisons Highpoint and Hollesley Bay also stand out on these maps as locations with higher ethnic diversity.

Percentage of usual resident population that are ethnically diverse, 2021 Census in Suffolk

By Lower Super Output Area (LSOA)

The numbers in brackets on the legend denote how many LSOAs there are per range

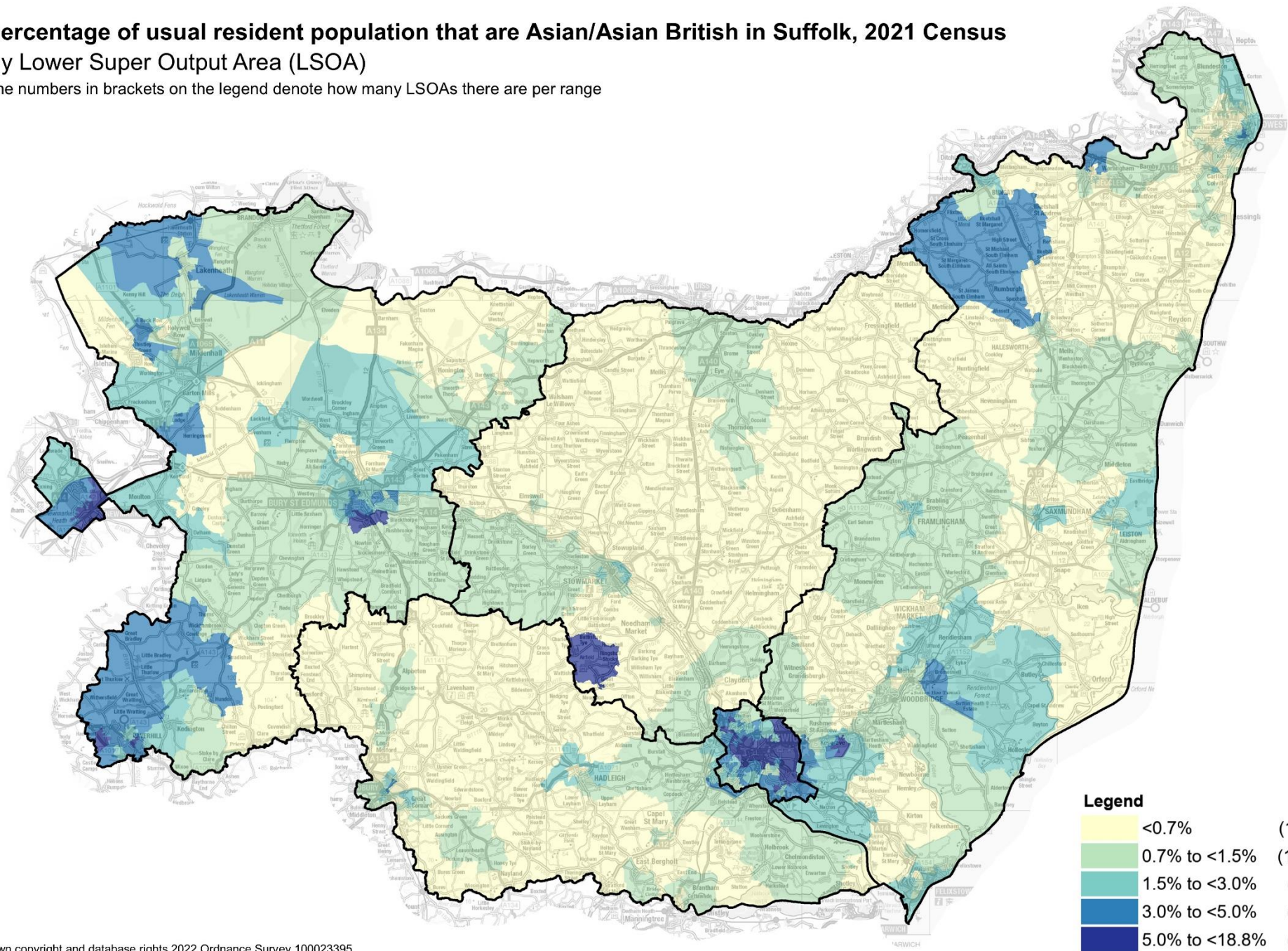
Ethnically diverse includes mixed/multiple ethnic groups, Asian/Asian British, Black/African/Caribbean/Black British and other ethnic group



Percentage of usual resident population that are Asian/Asian British in Suffolk, 2021 Census

By Lower Super Output Area (LSOA)

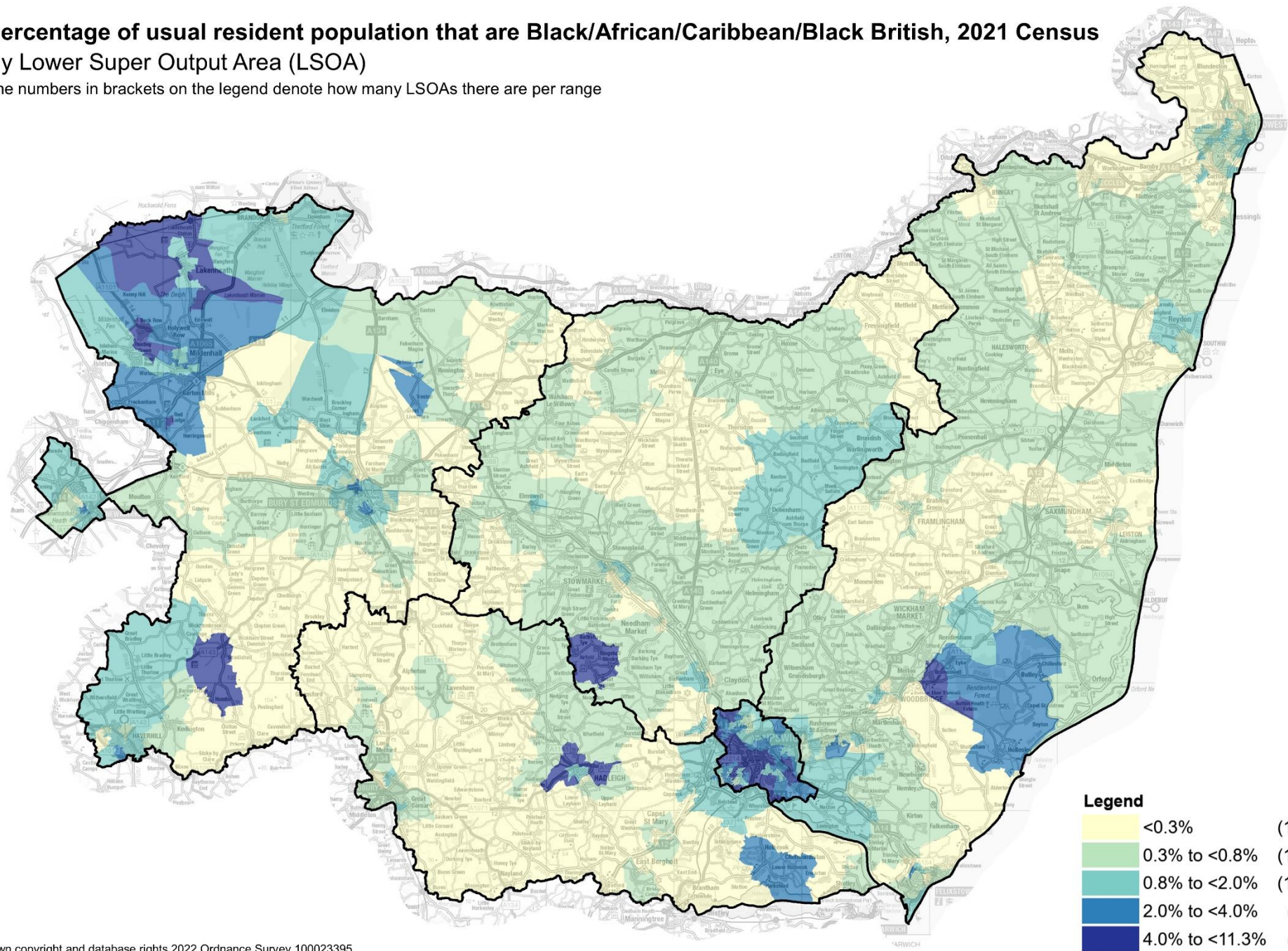
The numbers in brackets on the legend denote how many LSOAs there are per range



Percentage of usual resident population that are Black/African/Caribbean/Black British, 2021 Census

By Lower Super Output Area (LSOA)

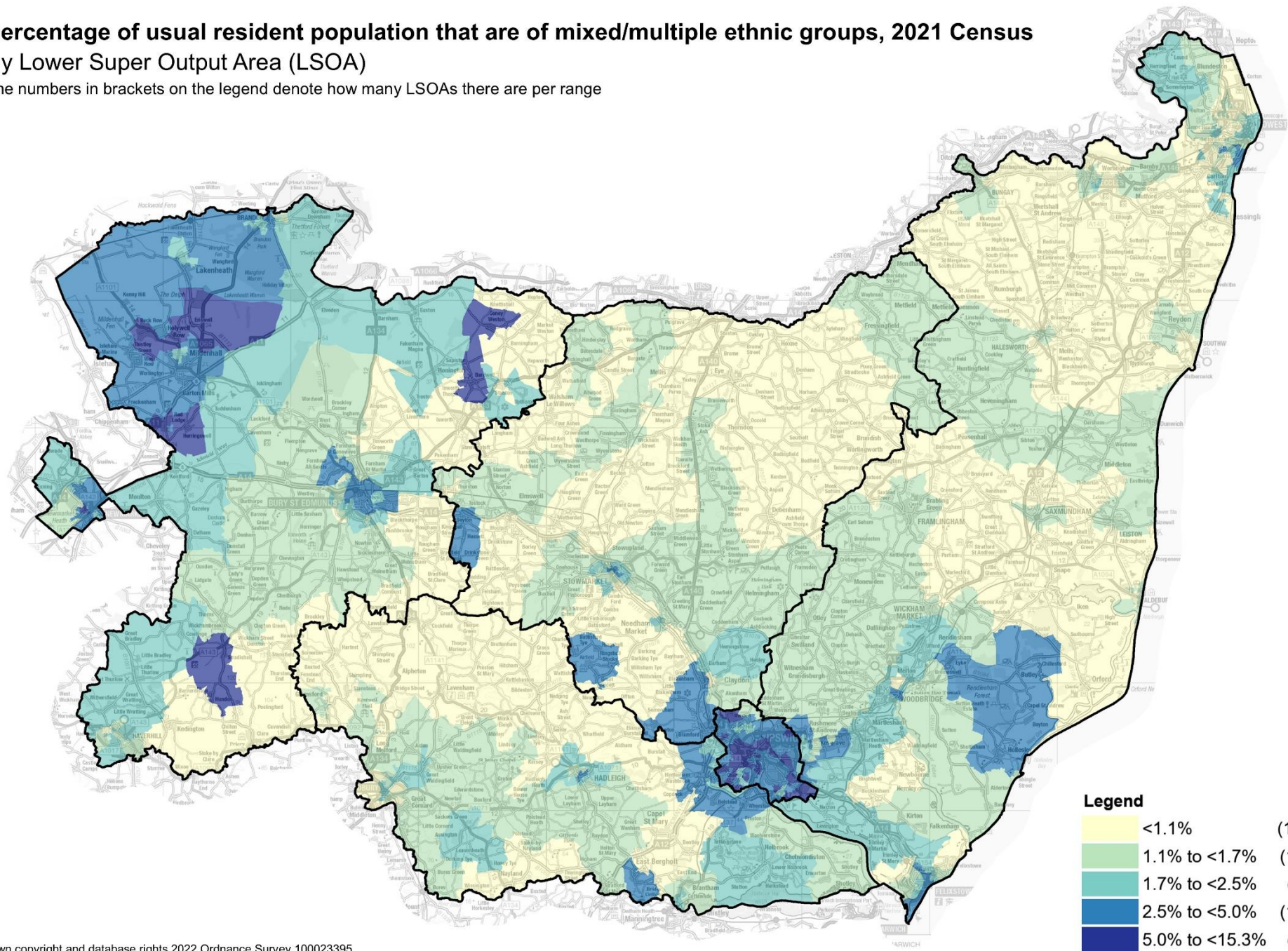
The numbers in brackets on the legend denote how many LSOAs there are per range



Percentage of usual resident population that are of mixed/multiple ethnic groups, 2021 Census

By Lower Super Output Area (LSOA)

The numbers in brackets on the legend denote how many LSOAs there are per range



Percentage of usual resident population that are of an ethnic group other than White British 2021 Census

By Lower Super Output Area (LSOA)

The numbers in brackets on the legend denote how many LSOAs there are per range

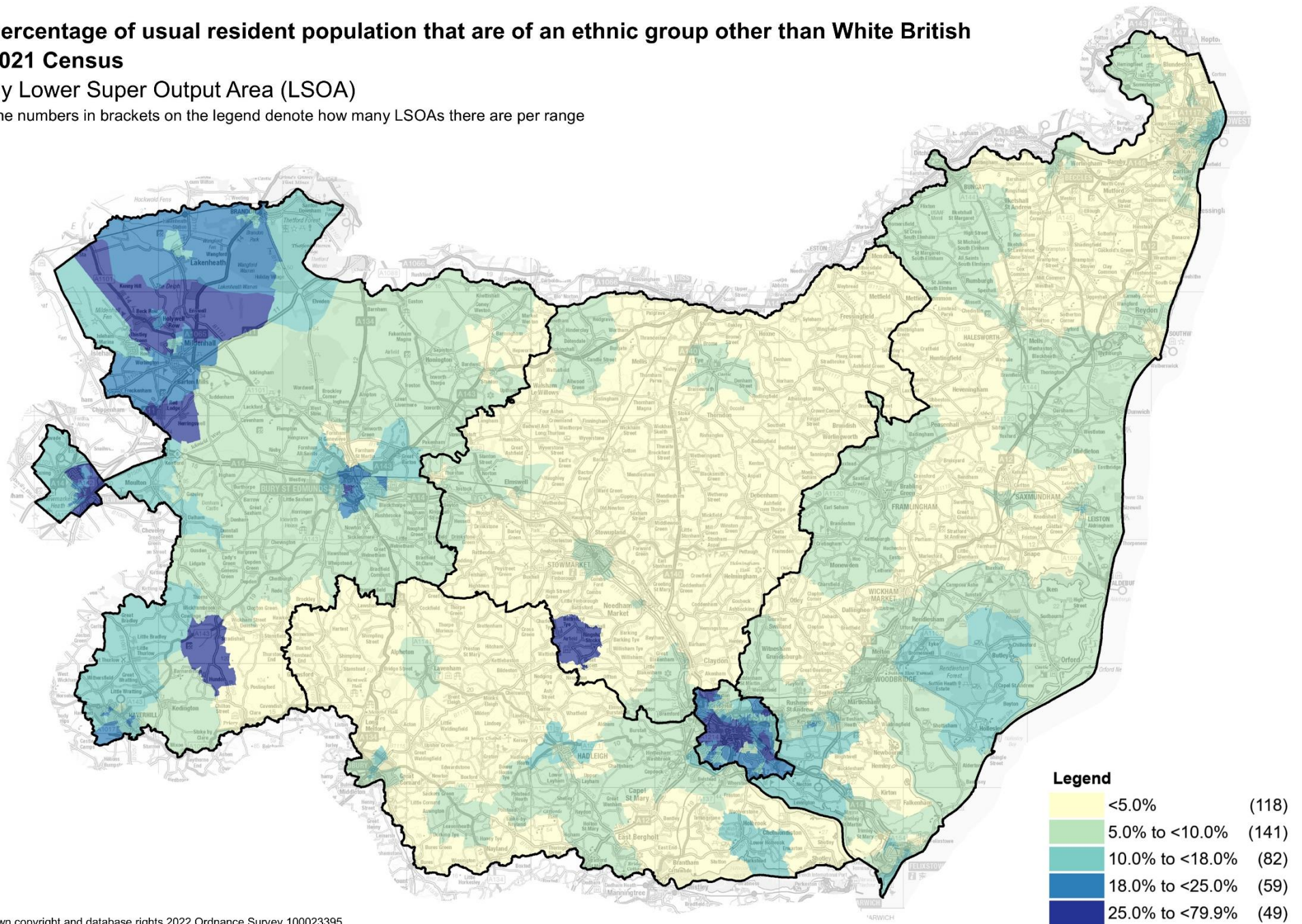
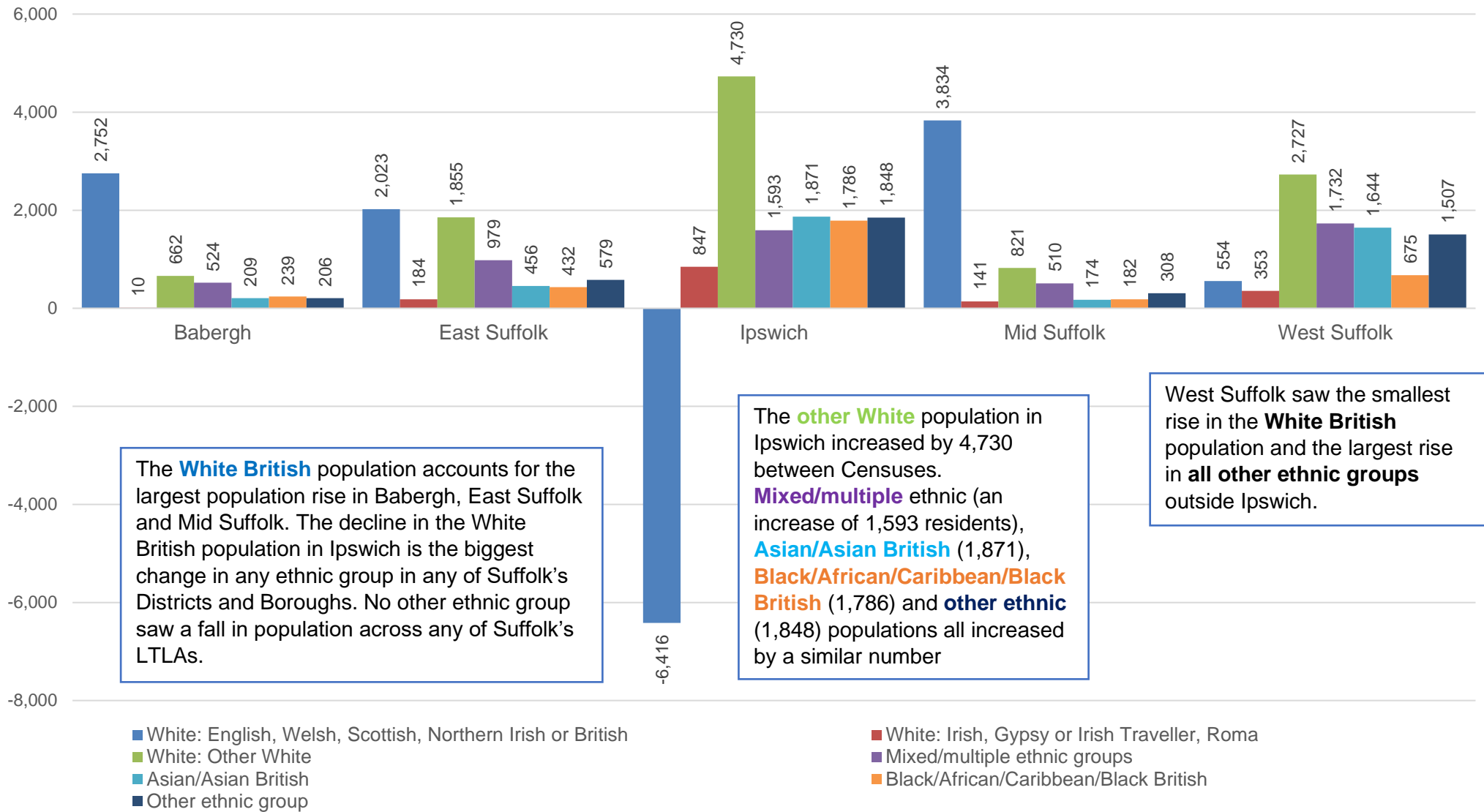


Chart 13: Change in population by ethnic group in Suffolk's Districts and Boroughs, 2011 Census to 2021 Census



Ethnic group (detailed)

286 different ethnic groups are represented in Suffolk's population according to 2011 Census outputs. [The detailed ethnic group data from the 2011 Census can be accessed by clicking the link below. This will download a Microsoft Excel file. https://www.nomisweb.co.uk/livelinks/16050.xlsx](https://www.nomisweb.co.uk/livelinks/16050.xlsx)

Multiple ethnic groups in household

Table 13: Multiple ethnic groups in household, percentage of total households, Suffolk, 2011 and 2021 Censuses

	2011	2021
One-person household	29.0%	31.2%
All household members have the same ethnic group	64.8%	61.5%
Ethnic groups differ between generations but not within partnerships	1.4%	1.1%
Ethnic groups differ within partnerships	3.9%	4.9%
Any other combination of multiple ethnic identities	0.9%	1.4%

- All household members have the same ethnic group in 61.5% of households in Suffolk, with a further 31.2% of households inhabited by one-person only.
- The number of households where ethnic groups differ within partnerships has increased by a third in Suffolk from 2011 to 2021. This increase is slightly below that seen across England and Wales.
- There are 3,741 households in which ethnic groups differ between generations but not within partnerships in 2021, a reduction of 646 (14.7%) since 2011. The England and Wales figure has fallen by a similar percentage over the decade.
- Households in which people of any other combination of multiple ethnic identities are living have increased by almost two-thirds in the county since 2011, though still account for a relatively small number of households; 4,514 in 2021.

Table 14: Multiple ethnic groups in household, count and percentage change in Suffolk and percentage change in England and Wales, 2011 and 2021 Censuses

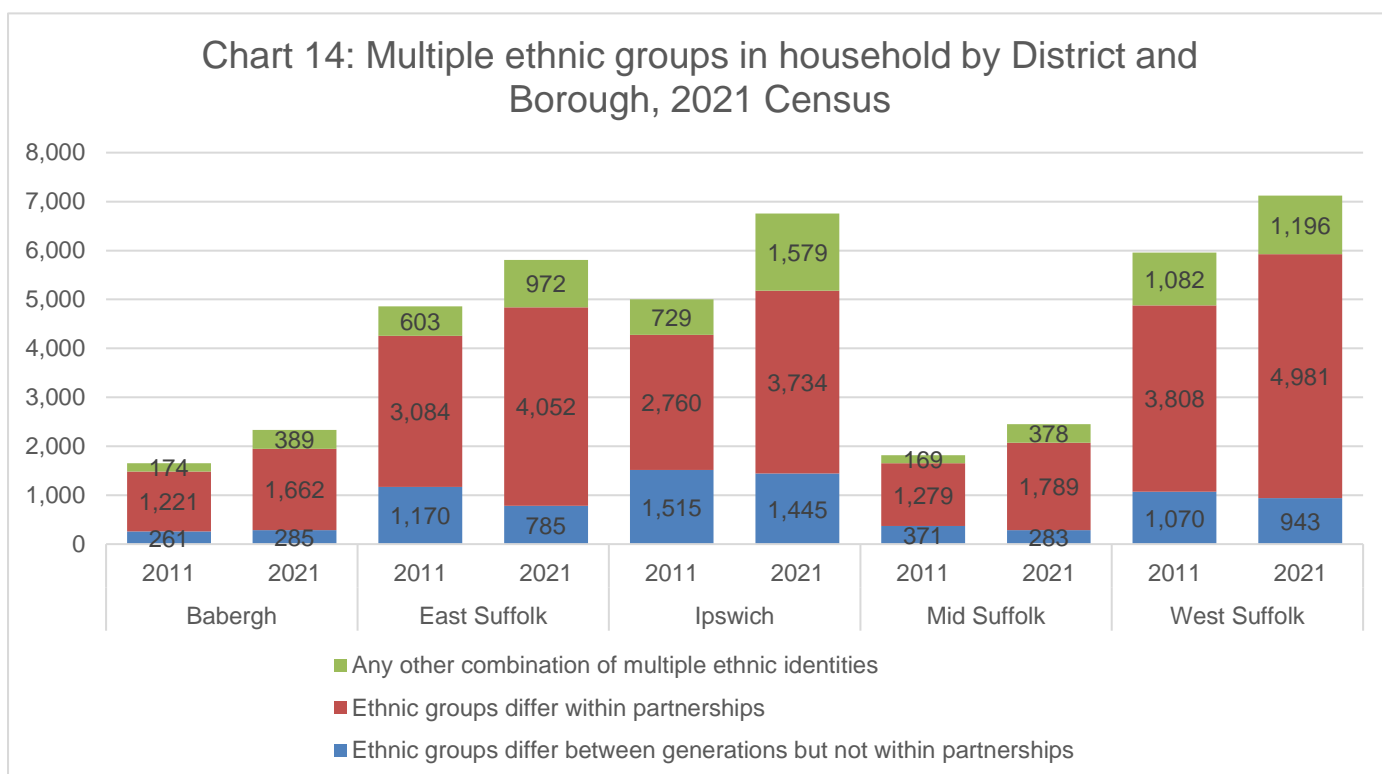
	Suffolk				England and Wales
	2011	2021	Change	% change	% change
One-person household	90,013	103,942	13,929	15.5%	5.9%
All household members have the same ethnic group	201,436	205,128	3,692	1.8%	3.6%
Ethnic groups differ between generations but not within partnerships	4,387	3,741	-646	-14.7%	-15.1%
Ethnic groups differ within partnerships	12,152	16,218	4,066	33.5%	35.4%
Any other combination of multiple ethnic identities	2,757	4,514	1,757	63.7%	41.3%

Table 15: Multiple ethnic groups in household, count and percentage of total households, Suffolk's Districts and Boroughs, 2021 Census

	One-person household		All household members have the same ethnic group		Ethnic groups differ between generations but not within partnerships		Ethnic groups differ within partnerships		Any other combination of multiple ethnic identities	
	Count	%	Count	%	Count	%	Count	%	Count	%
Babergh	11,382	28.3%	26,482	65.9%	285	0.7%	1,662	4.1%	389	1.0%
East Suffolk	35,819	32.3%	69,121	62.4%	785	0.7%	4,052	3.7%	972	0.9%
Ipswich	19,270	32.4%	33,479	56.3%	1,445	2.4%	3,734	6.3%	1,579	2.7%
Mid Suffolk	11,983	27.0%	29,910	67.5%	283	0.6%	1,789	4.0%	378	0.9%
West Suffolk	25,490	32.4%	46,136	58.6%	943	1.2%	4,981	6.3%	1,196	1.5%

- Ipswich has the largest ethnically diverse population of any of Suffolk's Districts and Boroughs by some margin (see table 11 on page 18), and this translates into a greater percentage of multiple ethnic group households.
- West Suffolk has the largest number of households in which ethnic groups differ within partnerships (4,981, 6.3% of total households in the District, the same proportion as Ipswich). The United States Air Force (USAF) personnel are likely to contribute significantly to this.

Chart 14: Multiple ethnic groups in household by District and Borough, 2021 Census



Appendix: Full ethnic group tables

Table 16: Ethnic group by District and Borough: 2011 Census and 2021 Census

	Babergh		East Suffolk		Ipswich		Mid Suffolk		West Suffolk	
	2011	2021	2011	2021	2011	2021	2011	2021	2011	2021
White: English, Welsh, Scottish, Northern Irish or British	83,666	86,418	227,040	229,063	110,624	104,208	92,747	96,581	147,381	147,935
White: Irish, Gypsy or Irish Traveller, Roma*	537	547	1,134	1,318	759	1,606	421	562	1,497	1,850
White: Other White	1,642	2,304	4,391	6,246	7,213	11,943	1,499	2,320	12,644	15,371
Mixed/multiple ethnic groups	827	1,351	2,728	3,707	4,816	6,409	953	1,463	3,148	4,880
Asian/Asian British	666	875	2,991	3,447	5,740	7,611	647	821	3,087	4,731
Black/African/Caribbean/Black British	264	503	925	1,357	3,096	4,882	371	553	2,198	2,873
Other ethnic group	138	344	343	922	1,136	2,984	93	401	801	2,308
Total	87,740	92,342	239,552	246,060	133,384	139,643	96,731	102,701	170,756	179,948

Table 17: Percentage of total population by ethnic group by District and Borough: 2011 Census and 2021 Census

	Babergh		East Suffolk		Ipswich		Mid Suffolk		West Suffolk	
	2011	2021	2011	2021	2011	2021	2011	2021	2011	2021
White: English, Welsh, Scottish, Northern Irish or British	95.4%	93.6%	94.8%	93.1%	82.9%	74.6%	95.9%	94.0%	86.3%	82.2%
White: Irish, Gypsy or Irish Traveller, Roma*	0.6%	0.6%	0.5%	0.5%	0.6%	1.2%	0.4%	0.5%	0.9%	1.0%
White: Other White	1.9%	2.5%	1.8%	2.5%	5.4%	8.6%	1.5%	2.3%	7.4%	8.5%
Mixed/multiple ethnic groups	0.9%	1.5%	1.1%	1.5%	3.6%	4.6%	1.0%	1.4%	1.8%	2.7%
Asian/Asian British	0.8%	0.9%	1.2%	1.4%	4.3%	5.5%	0.7%	0.8%	1.8%	2.6%
Black/African/Caribbean/Black British	0.3%	0.5%	0.4%	0.6%	2.3%	3.5%	0.4%	0.5%	1.3%	1.6%
Other ethnic group	0.2%	0.4%	0.1%	0.4%	0.9%	2.1%	0.1%	0.4%	0.5%	1.3%

*This group includes White Irish, White Gypsy or Irish Traveller and White Roma ethnic groups in 2021. In 2011, Roma were not split out as a separate group, so are included in Gypsy or Irish Traveller or White: Other White.

Table 18: Ethnic group: 2021 Census

Ethnic group	Babergh	East Suffolk	Ipswich	Mid Suffolk	West Suffolk	Suffolk	England and Wales
Total: All usual residents	92,342	246,060	139,643	102,701	179,948	760,687	59,597,542
White	89,269	236,627	117,757	99,463	165,156	708,271	48,699,249
White: English, Welsh, Scottish, Northern Irish or British	86,418	229,063	104,208	96,581	147,935	664,205	44,355,038
White: Irish	481	1,095	587	442	1,387	3,990	507,465
White: Gypsy or Irish Traveller	40	146	356	93	268	905	67,768
White: Roma	26	77	663	27	195	987	100,981
White: Other White	2,304	6,246	11,943	2,320	15,371	38,184	3,667,997
Mixed or Multiple ethnic groups	1,351	3,707	6,409	1,463	4,880	17,807	1,717,976
Mixed or Multiple ethnic groups: White and Asian	383	1,054	3,016	480	899	5,832	513,042
Mixed or Multiple ethnic groups: White and Black African	210	579	1,151	200	840	2,980	249,596
Mixed or Multiple ethnic groups: White and Black Caribbean	382	1,072	820	365	1,169	3,805	488,225
Mixed or Multiple ethnic groups: Other Mixed or Multiple ethnic groups	376	1,002	1,422	418	1,972	5,190	467,113
Asian, Asian British or Asian Welsh	875	3,447	7,611	821	4,731	17,483	5,515,420
Asian, Asian British or Asian Welsh: Bangladeshi	234	1,034	2,366	204	1,442	5,280	1,864,318
Asian, Asian British or Asian Welsh: Chinese	37	261	376	33	493	1,200	1,587,819
Asian, Asian British or Asian Welsh: Indian	107	283	2,015	36	286	2,727	644,881
Asian, Asian British or Asian Welsh: Pakistani	177	740	749	176	600	2,440	445,619
Asian, Asian British or Asian Welsh: Other Asian	320	1,129	2,105	372	1,910	5,836	972,783
Black, Black British, Black Welsh, Caribbean or African	503	1,357	4,882	553	2,873	10,168	2,409,278
Black, Black British, Black Welsh, Caribbean or African: African	124	422	1,508	166	561	2,781	623,119
Black, Black British, Black Welsh, Caribbean or African: Caribbean	287	712	2,483	274	1,312	5,068	1,488,381
Black, Black British, Black Welsh, Caribbean or African: Other Black	92	223	891	113	1,000	2,319	297,778
Other ethnic group	344	922	2,984	401	2,308	6,958	1,255,619
Other ethnic group: Arab	37	112	357	44	234	782	331,844
Other ethnic group: Any other ethnic group	307	810	2,627	357	2,074	6,176	923,775

Table 19: Ethnic group: 2011 Census

Ethnic Group	Babergh	East Suffolk	Ipswich	Mid Suffolk	West Suffolk	Suffolk	England and Wales
All usual residents	87,740	239,552	133,384	96,731	170,756	728,163	56,075,912
White	85,845	232,565	118,596	94,667	161,522	693,195	48,209,395
White: English/Welsh/Scottish/Northern Irish/British	83,666	227,040	110,624	92,747	147,381	661,458	45,134,686
White: Irish	486	992	610	345	1,311	3,744	531,087
White: Gypsy or Irish Traveller	51	142	149	76	186	604	57,680
White: Roma	Not listed as a separate group in 2011						
White: Other White	1,642	4,391	7,213	1,499	12,644	27,389	2,485,942
Mixed/multiple ethnic groups	827	2,728	4,816	953	3,148	12,472	1,224,400
Mixed/multiple ethnic groups: White and Asian	216	814	637	298	822	2,787	341,727
Mixed/multiple ethnic groups: White and Black African	92	422	655	120	496	1,785	165,974
Mixed/multiple ethnic groups: White and Black Caribbean	306	858	2,579	311	679	4,733	426,715
Mixed/multiple ethnic groups: Other Mixed	213	634	945	224	1,151	3,167	289,984
Asian/Asian British	666	2,991	5,740	647	3,087	13,131	4,213,531
Asian/Asian British: Bangladeshi	65	241	1,687	38	222	2,253	447,201
Asian/Asian British: Chinese	161	771	666	158	403	2,159	393,141
Asian/Asian British: Indian	180	949	1,801	170	899	3,999	1,412,958
Asian/Asian British: Pakistani	9	171	242	17	258	697	1,124,511
Asian/Asian British: Other Asian	251	859	1,344	264	1,305	4,023	835,720
Black/African/Caribbean/Black British	264	925	3,096	371	2,198	6,854	1,864,890
Black/African/Caribbean/Black British: African	133	477	1,025	164	825	2,624	989,628
Black/African/Caribbean/Black British: Caribbean	89	308	1,554	126	432	2,509	594,825
Black/African/Caribbean/Black British: Other Black	42	140	517	81	941	1,721	280,437
Other ethnic group	138	343	1,136	93	801	2,511	563,696
Other ethnic group: Arab	10	66	151	7	86	320	230,600
Other ethnic group: Any other ethnic group	128	277	985	86	715	2,191	333,096

Table 16: Multiple ethnic groups in household, count of households, Suffolk's Districts and Boroughs, Suffolk and England and Wales, 2011 and 2021 Censuses

	Babergh		East Suffolk		Ipswich		Mid Suffolk		West Suffolk		Suffolk	
	2011	2021	2011	2021	2011	2021	2011	2021	2011	2021	2011	2021
Total: All households	37,522	40,200	104,441	110,749	57,298	59,507	40,306	44,343	71,178	78,746	310,745	333,543
One-person household	10,570	11,382	31,390	35,819	18,507	19,270	10,219	11,983	19,327	25,490	90,013	103,942
All household members have the same ethnic group	25,296	26,482	68,194	69,121	33,787	33,479	28,268	29,910	45,891	46,136	201,436	205,128
Ethnic groups differ between generations but not within partnerships	261	285	1,170	785	1,515	1,445	371	283	1,070	943	4,387	3,741
Ethnic groups differ within partnerships	1,221	1,662	3,084	4,052	2,760	3,734	1,279	1,789	3,808	4,981	12,152	16,218
Any other combination of multiple ethnic identities	174	389	603	972	729	1,579	169	378	1,082	1,196	2,757	4,514

Table 17: Multiple ethnic groups in household, percentage of total households, Suffolk's Districts and Boroughs, Suffolk and England and Wales, 2011 and 2021 Censuses

	Babergh		East Suffolk		Ipswich		Mid Suffolk		West Suffolk		Suffolk		England and Wales	
	2011	2021	2011	2021	2011	2021	2011	2021	2011	2021	2011	2021	2011	2021
One-person household	28.2%	28.3%	30.1%	32.3%	32.3%	32.4%	25.4%	27.0%	27.2%	32.4%	29.0%	31.2%	30.2%	30.2%
All household members have the same ethnic group	67.4%	65.9%	65.3%	62.4%	59.0%	56.3%	70.1%	67.5%	64.5%	58.6%	64.8%	61.5%	61.1%	59.7%
Ethnic groups differ between generations but not within partnerships	0.7%	0.7%	1.1%	0.7%	2.6%	2.4%	0.9%	0.6%	1.5%	1.2%	1.4%	1.1%	2.2%	1.8%
Ethnic groups differ within partnerships	3.3%	4.1%	3.0%	3.7%	4.8%	6.3%	3.2%	4.0%	5.3%	6.3%	3.9%	4.9%	4.5%	5.7%
Any other combination of multiple ethnic identities	0.5%	1.0%	0.6%	0.9%	1.3%	2.7%	0.4%	0.9%	1.5%	1.5%	0.9%	1.4%	2.0%	2.6%

Further reading

- All of the 2021 data referenced here is available on the [Office for National Statistics website](https://www.ons.gov.uk/releases/ethnicgroupnationalidentitylanguageandreligioncensus2021inenglandandwales) <https://www.ons.gov.uk/releases/ethnicgroupnationalidentitylanguageandreligioncensus2021inenglandandwales>
- Data from the 2021 Census and previous editions of the Census [can also be found on NOMIS](https://www.nomisweb.co.uk/) <https://www.nomisweb.co.uk/>
- 2021 Census data for Suffolk will also be made available on the [Suffolk Observatory](https://www.suffolkobservatory.info/) <https://www.suffolkobservatory.info/>
- For further information and analysis of some of the topics addressed in this paper, [see the Suffolk Joint Strategic Needs Assessment \(JSNA\) on the Healthy Suffolk website](https://www.healthysuffolk.org.uk/jsna/index-of-reports) <https://www.healthysuffolk.org.uk/jsna/index-of-reports>